



ARDIDEN

29 January 2021

DECEMBER 2020 QUARTERLY ACTIVITIES REPORT

HIGHLIGHTS

- **Drilling, geophysics and permitting agreements completed at Ardiden's district scale Pickle Lake Gold Project in northwest Ontario, Canada.**
 - **3,117m summer drilling campaign completed at Kasagiminnis Gold deposit.**
 - **Tier-1 scale geophysical targets revealed at the New Patricia Gold prospect.**
 - **Drone magnetic survey completed at the Company's South Limb gold prospect to refine drill targeting.**
 - **Additional ground aggregated to improve exploration logistics and prospective gold ground at Pickle Lake.**
 - **Permit application advanced to drill at the Esker Gold prospect.**
- **Winter drilling at the South Limb Gold prospect commenced January 2021 testing directly along strike of the Dona Lake Gold Mine.**
- **Ardiden's three, 100%-owned hard-rock Lithium Projects in northwest Ontario at Seymour Lake, Root Lake and Wisla Lake, maintained and in good standing.**

CORPORATE

- **Annual General Meeting (AGM) held on 26 November 2020 with all resolutions passed.**
- **Option Exercise raises \$571,750 and exercise of options held by MD & CEO.**
- **Strong cash position with cash balance of AUD3.25m as of 31 December 2020**

Gold explorer **Ardiden Limited** ('Ardiden' or 'the Company') (ASX: ADV) is pleased to report on Quarterly Activities at its highly prospective Pickle Lake Gold Project and three hard-rock Lithium Projects in northwest Ontario, Canada.

Ardiden has continued to grow its district-scale gold tenement package across a 100km width boasting highly prospective greenstone belts at the eastern end of the Archean Uchi Geological sub-province (*Figure 1*), which also hosts the 30Moz Red Lake gold mining centre.

At Pickle Lake, Ardiden has aggregated a commanding 870km² gold tenure in the Tier-1 mining jurisdiction of Ontario Canada. The Company is systematically exploring for new gold discoveries as well as extensions of existing deposits across its predominately 100%-owned continuous exploration ground, hosting to date:

- **A JORC (2012) Inferred Resource of 110,000oz @ 4.30 g/t Au at Kasagiminnis Deposit**
(ASX release 10 Sep 2019)
- **An Exploration Target* at Kasagiminnis of 0.5 - 1.2Moz @ 3.9 - 6.6g/t Au**
(ASX release 27 May 2020)
- **A Historical estimate* of 99,600oz @ 5.8g/t Au at the Dorothy + Dobie Deposits**
(ASX release 2 Aug 2017)

** The potential quantities and grades stated for the Exploration Target is conceptual in nature and there has been insufficient exploration to define Mineral Resources across the exploration target area. It is uncertain if further exploration of these targets will produce results that permit additional Mineral Resources to be estimated. Historical estimates by original owners of the Dorothy and Dobie Deposits, were summarised in 2009 in an NI43-101 Technical Report on Gold Properties within the Pickle Lake area (Harron, 2009). The historical estimates are not reported in accordance with the JORC Code and a competent person has not done sufficient work to classify the historical estimates as mineral resources in accordance with the JORC Code. It is uncertain that following evaluation and further exploration work that the historical estimates will be able to be reported as mineral resources in accordance with the JORC Code.*



ARDIDEN

GOLD SUMMARY - Gold Exploration field activities at the Pickle Lake Gold Project extended through to December with the Kasagiminnis drill programme along with a UAV Airborne mag survey conducted at South Limb and geochemical sampling of the Kasagiminnis Gold Deposit.

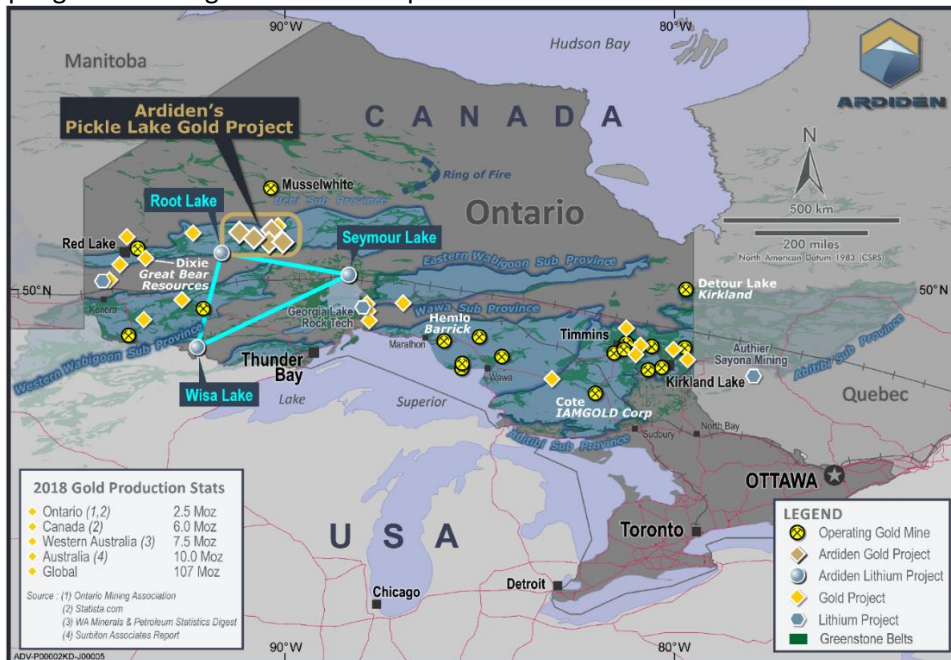


Figure 1- Ardiden's Pickle Lake Gold Project located in north-western Ontario, Canada.

LITHIUM SUMMARY - All three of Ardiden's 100%-owned hard-rock Lithium Projects in northwest Ontario (Figure 2) remain in good standing and are readily accessible. The Seymour Lake Lithium Project hosts an existing JORC (2012) Indicated and Inferred Resource of **4.8Mt @ 1.25% Li₂O** with an additional Exploration Target of **4.5-7.2Mt @ 0.8-2.4% Li₂O**.

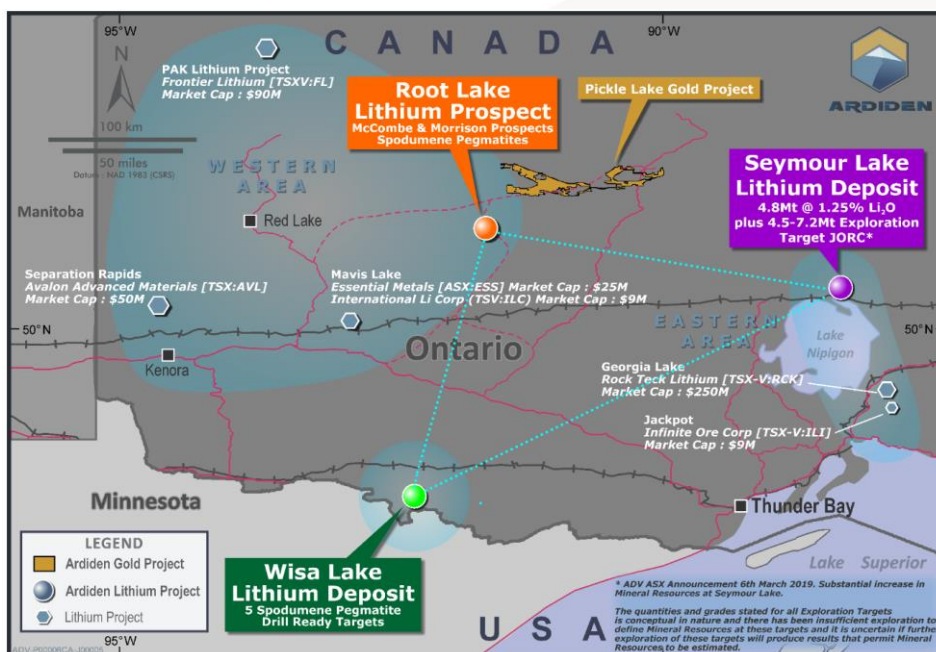


Figure 2- Ardiden's three hard-rock Lithium Projects, also located in north-western Ontario, Canada.



GOLD EXPLORATION ACTIVITIES

During the period, exploration work concentrated on three Gold Prospects within the greater Pickle Lake Gold Project (Figure 3): 1) Kasagiminnis Gold Deposit; 2) South Limb Gold Prospect and 3) New Patricia Gold Prospect.

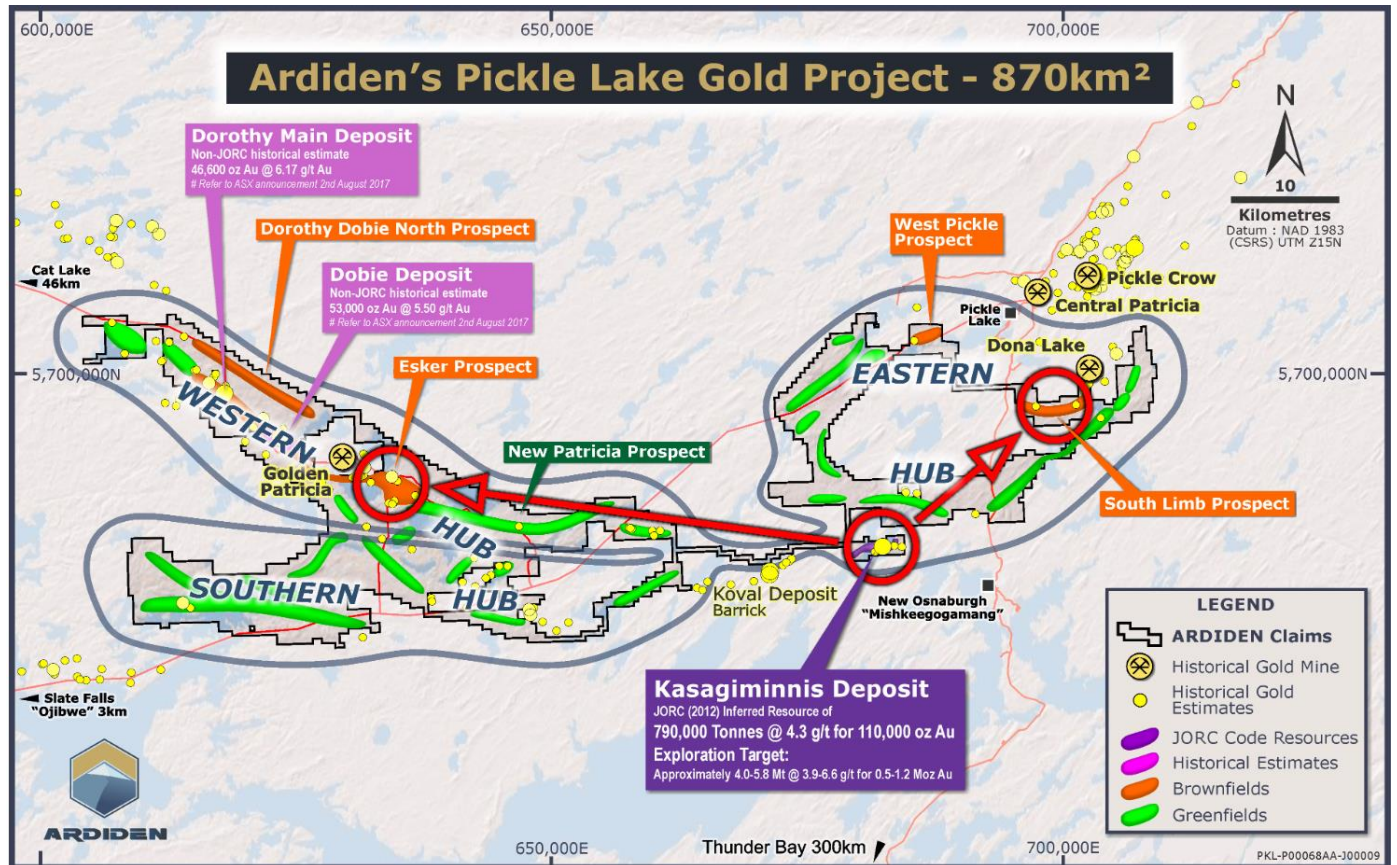


Figure 3- Ardiden's Pickle Lake Gold Project subdivided into Eastern, Western and Southern Hubs

1 - KASAGIMINNIS GOLD DEPOSIT – EXPLORATION SUMMER DRILLING PROGRAM

Drilling was completed at Kasagiminnis with international drilling company, Major Drilling, in December 2020. Kasagiminnis is 100%-owned by Ardiden and is a new discovery with no historical mining or exploitation of the *in-situ* gold resource.

Verified results of the first 10 holes were reported during the quarter from four drill pads at Kasagiminnis (Figure 4 (refer to ASX announcement 16 December 2020)). The total metres drilling during the Kasagiminnis Summer drilling Programme was 3,117m. All drill core was logged and cut on site at Pickle Lake before being transported 330km south to the analytical laboratory in Thunder Bay.

- Best results to date from drilling at Kasagiminnis Gold Deposit included:
 - 6.0m @ 4.23g/t Au in drillhole KAS2002, including 2m @ 9.53g/t Au.
 - 6.5m @ 4.28g/t Au in drillhole KAS2003.
 - 21.0m @ 3.97g/t Au in KAS1804 incl. 12.5m @ 5.90 g/t Au and 2.8m @ 9.17g/t Au
 - 15.4m @ 3.21 g/t Au in KAS1808.
 - 26.2m @ 3.19g/t Au in KAS1810.
 - Assays still pending for holes KAS2012 and KAS2014, drilled within the main mineralised zone at Kasagiminnis.

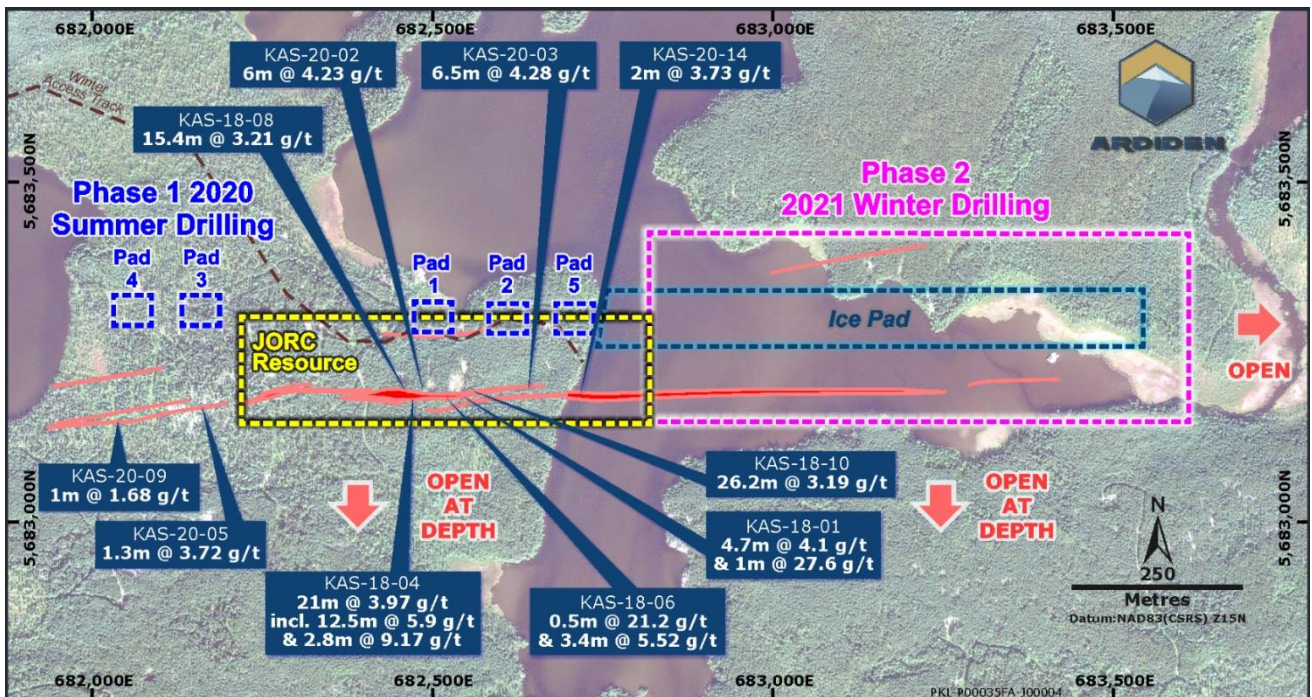


Figure 4-Drill Planning at the Kasagiminnis Gold Deposit

Fifteen resource definition drillholes were completed efficiently and with no incidents over the 8,109 manhours completed by Ardiden and its contractors at Kasagiminnis. Drilling intersected wide zones of alteration and associated sulphides with visible gold also noted in the very first hole (refer to ASX Announcement 3 September 2020 and 16 December 2020).

2 - KASAGIMINNIS GOLD DEPOSIT – GEOCHEMICAL SAMPLING PROGRAM

A **geochemical sampling programme** (Figure 5) was completed over known areas of gold mineralisation at Kasagiminnis. Results of this initial programme will be examined to evaluate whether larger regional geochemical programmes over under-explored areas are likely to be effective for pathfinder purposes across the Company's expansive Pickle Lake Gold Project landholding.



Figure 5-Pre-start Rig Toolbox meeting (left) and Geochemical sampling at Kasagiminnis.



3 - KASAGIMINNIS GOLD DEPOSIT: WINTER ACCESS TRAIL

Logistical planning and an **increased Winter Drilling Programme at Kasagiminnis** commenced with a permitted Winter Track from the main “Highway 599” out to the Kasagiminnis Gold Deposit, as shown below (Figure 6). Most of the trail has been completed and this will provide a cost-effective access solution for the planned winter drilling programme.



Figure 6-Progress on the Kasagiminnis Winter Access Track

This necessitated staking additional ground north of Kasagiminnis, which is also prospective for gold mineralisation: “Kasagiminnis North” and “250 North” Gold Prospects are shown below on Figure 7.

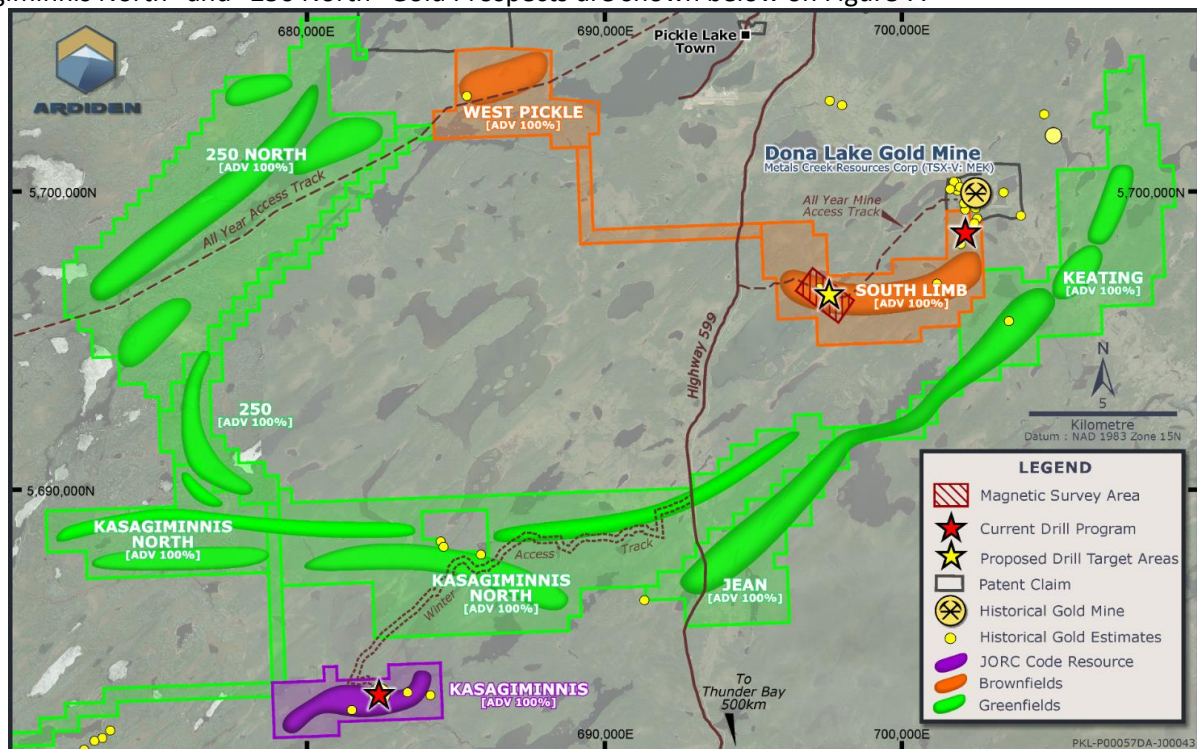


Figure 7- Pickle Lake Gold Project ‘Eastern Hub’ showing Kasagiminnis, South Limb, Main Highway and Access tracks



4 - SOUTH LIMB GOLD PROSPECT: MOU WITH FIRST NATION GROUP, MINES DEPARTMENT PERMIT AND MAGENTICS DRONE SURVEY

Ardiden's South Limb Gold Prospect is situated 17km north-east of Kasagiminnis and directly adjoins Newmont's Dona Lake Gold Mine. Dona Lake produced 246,500oz of gold at 6.6g/t Au* to a depth of 450m before its closure in 1993 as a result of a weak gold price.

During the quarter, two critical requirements were completed to allow Ardiden's Exploration work to advance in a socially responsible and collaborative manner (refer ASX announcement 6 October 2020):

- An Exploration Memorandum of Understanding ("MOU") with the Mishkeegogamang First Nation Group of Ontario, Canada for the South Limb Gold Prospect;
- The Ontario Mines Department (MENDM) issue of the Exploration Permit to undertake work on the South Limb Prospect.

Ardiden completed a drone-mounted geophysical survey at South Limb utilising a UAV-mounted magnetometer to assist targeting of two high-priority areas at the Prospect.

As illustrated on Figure 8, Ardiden has designed a diamond drill programme at South Limb to provide an initial test of mineralisation within the Iron Formations extending south from the Dona Lake Gold mine. The concentration of Iron Formation in this largely untested area, in close proximity to a known gold deposit, makes this a high priority target to drill test.

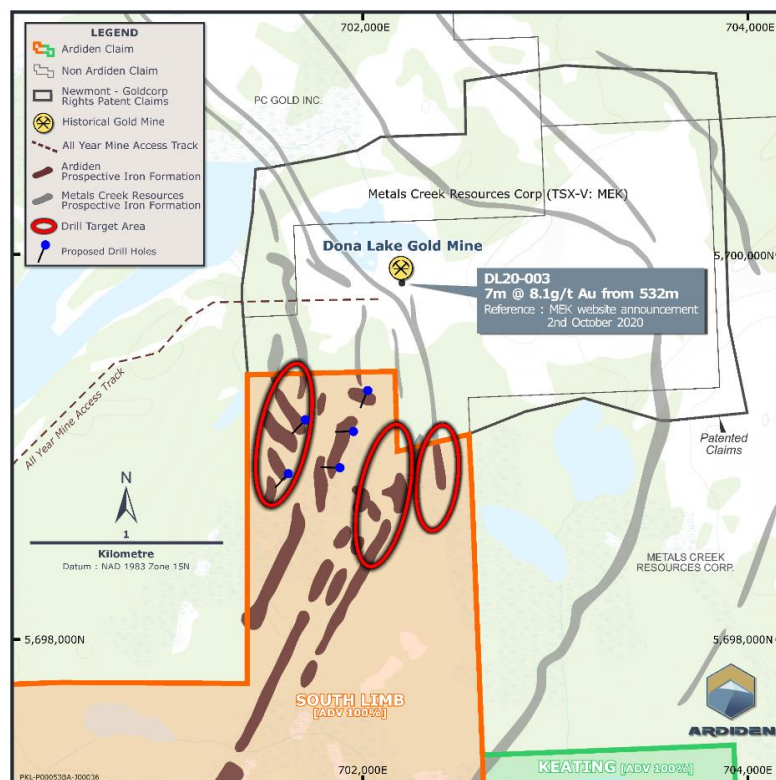


Figure 8-South Limb Drill Targets and Proximity to the Dona Lake Gold Mine

*Information in relation to historical gold production at the Dona Lake Gold Mine above has been referenced from three sources of publication, namely: 1. Harron, G. A. 2009. Technical Report on Three Gold Exploration Properties Pickle Lake Area, Ontario, Canada. G.A. Harron, P.Eng., G.A. Harron & Associates Inc. 2. Smyk, M., Hollings, P. and Pettigrew, N., 2015. Geology and Mineral Deposits of The Pickle Lake Greenstone Belt. Institute on Lake Superior Geology, May 20-24, 2015 Field Trip Guidebook and 3. Puumala, M. A. 2009. Mineral Occurrences of the Central and Eastern Uchi Domain. Ontario Geological Survey, Open File Report 6228



ARDIDEN

5 - ESKER GOLD PROSPECT: MINES DEPARTMENT PERMIT TO DRILL

The expansion of exploration activities into the western hub and planning for drilling at the Esker gold prospect during 2021 is underway with a permit application to undertake exploration work at Esker. This is scheduled to be granted in February 2021. First Nation Agreement discussions were also commenced during the quarter and will continue in early 2021.

Detail airborne magnetics flown by the Company over the entire New Patricia gold prospect (refer ASX announcement 13 October 2020) identified multiple Tier-1 large-scale structural targets that display similar characteristics to known gold camps in the District, namely Golden Patricia (Barrick) and Musselwhite (Newmont Corp.).

Drill planning is underway at the **Esker Gold Prospect** along with several other high priority targets within the work permit area lodged (Figure 9).

Mined between 1988 and 1997, the Golden Patricia underground mine produced 619,796oz gold at 15.2 g/t Au* to depths of 750m below surface.

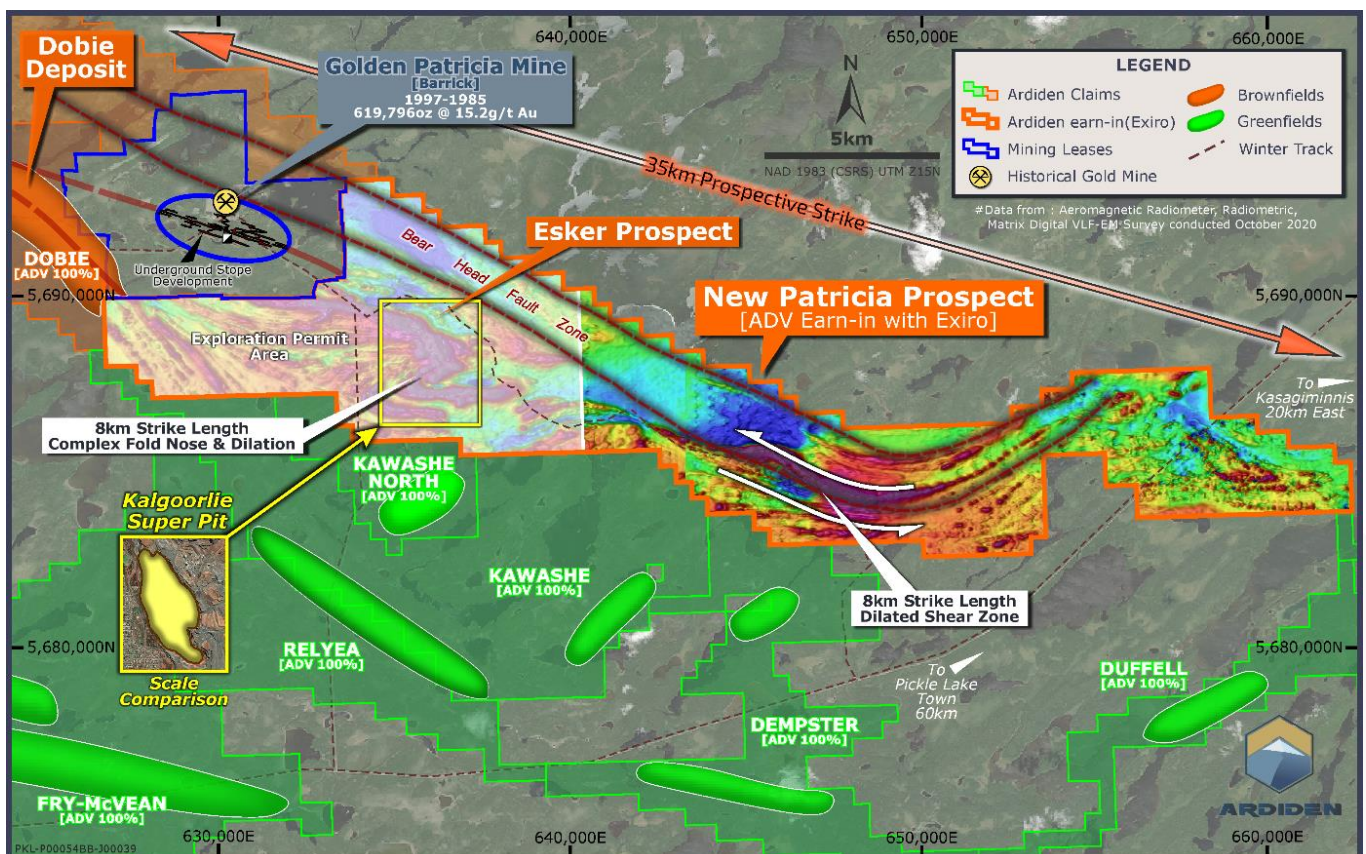


Figure 9-Exploration Permit Area within the identified Gold Deposits and Prospects along the 'New Patricia' Gold Property

*Information in relation to historical gold production at the Dona Lake and Golden Patricia Mine above has been referenced from three sources of publication, namely: 1. Harron, G. A. 2009. Technical Report on Three Gold Exploration Properties Pickle Lake Area, Ontario, Canada. G.A. Harron, P.Eng., G.A. Harron & Associates Inc. 2. Smyk, M., Hollings, P. and Pettigrew, N., 2015. Geology and Mineral Deposits of The Pickle Lake Greenstone Belt. Institute on Lake Superior Geology, May 20-24, 2015 Field Trip Guidebook and 3. Puumala, M. A. 2009. Mineral Occurrences of the Central and Eastern Uchi Domain. Ontario Geological Survey, Open File Report 6228



6 – ADDITIONAL GOLD LANDHOLDING

The Company has increased its landholding at the Pickle Lake Gold Project to 870km². This increase of ~203km² was achieved by staking available prospective Archaean greenstone ground, which remains attached to, and contiguous with, the Company’s predominantly 100%-owned Gold Project (Figure 10).

This includes additional ground staked along the **Dorothy-Dobie trend** and around the **Golden Patricia Gold Mine** (Barrick) in the ‘Western Hub.’

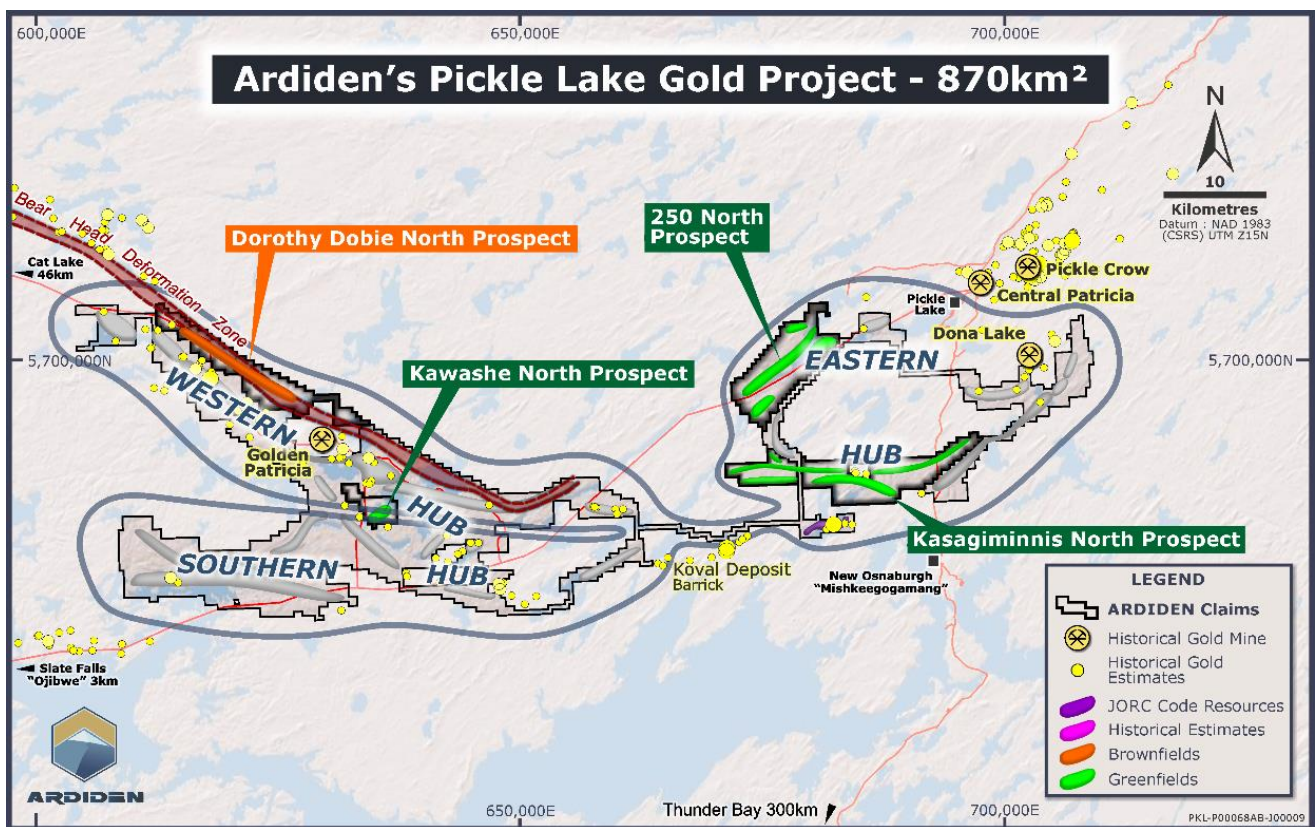


Figure 10-Additional Prospects added into Ardiden's Pickle Lake Gold Project

LITHIUM EXPLORATION ACTIVITIES

Ardiden’s most advanced Lithium Project, Seymour Lake, is ideally located close to the trans-Canadian railway, the industrial hub of Thunder Bay (Figure 11) and US markets. Ardiden and Rock Tech (TSV: RCK) have diligently worked through each project dataroom and have a good appreciation for the quality and value adding options for the lithium assets. The Companies have not yet proceeded to additional detail beyond the initial terms of the non-binding MOU, (refer ASX announcement 15 October 2019), while the greater area of potential Lithium synergies in Ontario and Quebec in particular, is reviewed in conjunction with current changes to US and other governments incentives and policies, in relation to critical minerals and EV battery markets.

Ardiden is actively reviewing a number of positive options on how to progress all three of its high quality 100%-owned Lithium properties in northwest Ontario, to deliver maximum value for shareholders.



ARDIDEN

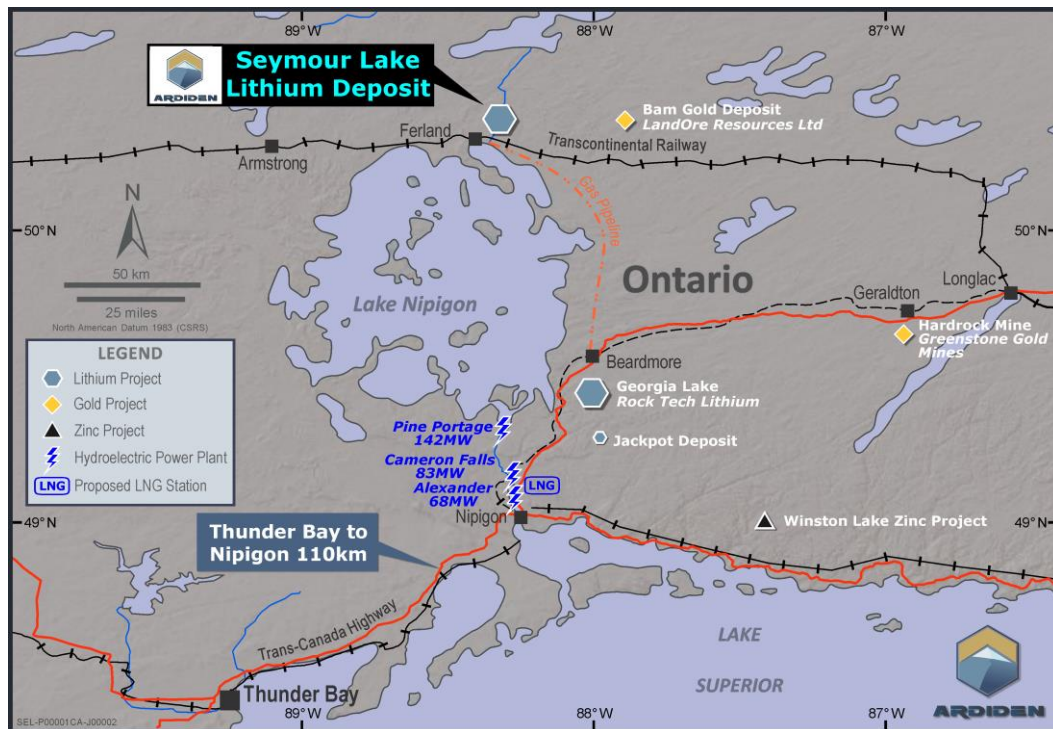


Figure 11-Location of Ardiden's Seymour Lake and Rock Tech's Georgia Lake Lithium Projects

The Company meanwhile conducted a field mapping programme at its Root Lake Lithium Prospect, one of the Company's three 100%-owned Lithium properties located in northwest Ontario; (Seymour Lake, Root Lake and Wisa Lake). Root Lake is located very close to Pickle Lake and has multiple outcropping spodumene bearing pegmatites that represent relatively straightforward walk-up drill targets.



Figure 12-Mapped Spodumene-bearing pegmatites and samples at the Morrison Prospect (Root Lake Lithium Project)



ARDIDEN

A field mapping programme was conducted over the McCombe and Morrison Prospects to verify the extent of outcropping pegmatites and historical trenching at the Morrison Prospect (Figure 13).

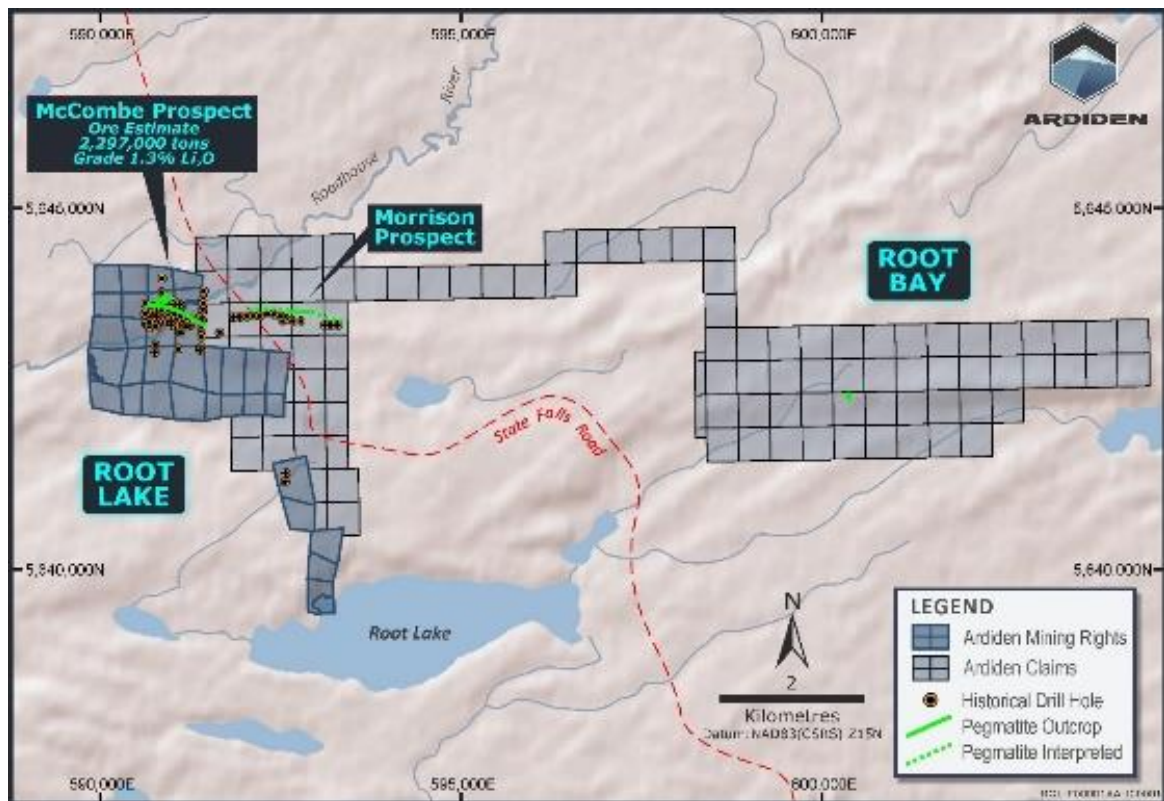


Figure 13- Ardiden's 100% owned Root Lake Lithium Project

CORPORATE

Annual General Meeting

Ardiden held its AGM on 26 November 2020, with all resolutions presented being passed.

Exercise of Options

Option Exercise raised \$250,000 (refer ASX announcement 28 October 2020) and \$321,750 (refer ASX announcement 30 October 2020) and exercise of options held by MD & CEO (refer ASX announcement 21 December 2020).

Investor Relations

Ardiden attended participated in the Mines and Money Online Connect Global and the Investor Outreach Online platform.

Cash Position

The Company's cash balance on 31 December 2020 was:

Australia: AUD 699,013

Canada: CAD 2,507,092

Total AUD 3,252,580 equivalent (utilising AUD-CAD 0.982 @ 31 December 2020)



ARDIDEN

Cash outflows for the December Quarter totalled \$1.37million across exploration activity (86%), staff costs (8%), corporate administration (5%), and net GST/HST payments (1%). Payments to related parties and their associates (as set out in section 6 of the Appendix 5B) totalled \$106,000, consisting of Executive and Non-executive Directors fees and salaries, and superannuation payments. Cash inflows for the December Quarter totalled \$572,000 from options exercised.

This information is authorised for ASX release by Rob Longley (Managing Director & CEO).

ENDS

For further information:

Investors:

Rob Longley

MD & CEO

Tel: +61 8 9322 7600

info@ardiden.com.au

Margie Livingston

Investor Relations:

Tel +61 8 9322 7600

info@ardiden.com.au

Forward Looking Statement

This announcement may contain some references to forecasts, estimates, assumptions and other forward-looking statements. Although the company believes that its expectations, estimates and forecast outcomes are based on reasonable assumptions, it can give no assurance that they will be achieved. They may be affected by a variety of variables and changes in underlying assumptions that are subject to risk factors associated with the nature of the business, which could cause actual results to differ materially from those expressed herein. All references to dollars (\$) and cents in this presentation are to Australian currency, unless otherwise stated. Investors should make and rely upon their own enquires and assessments before deciding to acquire or deal in the Company's securities.

About Ardiden Ltd

Ardiden Limited is an ASX-listed company focused on gold exploration at its Pickle Lake Gold Project in north-west Ontario, Canada. The project consists of 870km² of highly prospective gold landholdings across 22 identified Gold Deposits and Prospects.

Ardiden also has 100% ownership of three hard-rock (spodumene) Lithium Projects in north-west Ontario and is well positioned to derive benefit from both the gold and lithium exploration sectors of the market.

For more information including modelling parameters and details, the ASX announcements pertaining to Exploration Results and Mineral Resources are available from the Company's website: www.ardiden.com.au

GOLD:

Exploration Results, Pickle Lake Gold Project - *The information in this report that relates to Exploration Results and Exploration Targets at the Pickle Lake Prospects is based on information compiled by Mr Robin Longley, a Member of the Australian Institute of Geoscientists. Mr Longley is a full-time employee of Ardiden Limited. Mr Longley has sufficient experience which is relevant to the style of mineralisation and type of deposit and to the activity which they are undertaking to qualify as a Competent Person as defined in the 2012 Edition of the "Australasian Code for Reporting of Exploration Results, Mineral Resources and Ore Reserves". Mr Longley consents to the inclusion in this report of the matters based on this information in the form and context in which it appears.*

Kasagiminnis Deposit Gold Resources - *The information in this report that relates to Exploration Results and Mineral Resources is based on information compiled by Mr Robin Longley, a Member of the Australian Institute of Geoscientists, and Mrs Christine*



ARDIDEN

Standing, a Member of the Australian Institute of Geoscientists and a Member of the Australasian Institute of Mining and Metallurgy. Mr Longley is a full-time employee of Ardiden Limited. Mrs Standing is employed by Optiro Pty Ltd and is a consultant to Ardiden. Mr Longley and Mrs Standing have sufficient experience which is relevant to the style of mineralisation and type of deposit and to the activity which they are undertaking to qualify as a Competent Person as defined in the 2012 Edition of the "Australasian Code for Reporting of Exploration Results, Mineral Resources and Ore Reserves". Mr Longley and Mrs Standing consent to the inclusion in this report of the matters based on this information in the form and context in which it appears.

The Company confirms it is not aware of any new information or data that materially affects the information included in this announcement and that all material assumptions and technical parameters underpinning the mineral resource estimates continue to apply and have not materially changed.

The information in this report that relates to **non-JORC Historical Estimates** is based on, and fairly represents, information and supporting documentation prepared by Mr Robin Longley, a Member of the Australian Institute of Geoscientists. The information in this announcement provided under ASX Listing Rules 5.12.2 to 5.12.7 is an accurate representation of the available data and studies for the Pickle Lake Gold Project. Mr Longley is a full-time employee of Ardiden Limited. Mr Longley consents to the inclusion in this report of the matters based on this information in the form and context in which it appears.

LITHIUM:

The Seymour Lake Lithium Project, 100% owned by Ardiden, contains the North Aubry Lithium Deposit, the South/central Aubry Lithium Deposit, the Pye Lithium Prospect and several areas in which pegmatites have been discovered but require additional testing. Ardiden's work has focussed upon evaluating the potential of the spodumene mineralisation at the North Aubry Lithium Deposit, both in terms of the scale and grade of the mineralisation and also the processing characteristics of the mineralisation. Preliminary metallurgical testing has confirmed the potential to produce a high-quality spodumene concentrate from the North Aubry mineralisation and exploration has confirmed that the grade of mineralisation is significant. The Seymour Lake Lithium Project is adjacent to the trans-Canadian railway with direct access to Ferland Train Station.

Seymour Lake Lithium Resources - The information in this announcement that relates to the Mineral Resource Estimate and the Exploration Target adjacent to the North Aubry Mineral Resource is based on, and fairly represents, information and supporting geological information and documentation that has been prepared by Mr Philip Alan Jones, an independent consulting geologist whom is a Member of the AusIMM and a Member of the AIG. Mr Jones is a Competent Person as defined in the 2012 edition of the "Australasian Code for Reporting of Exploration Results, Mineral Resources and Ore Reserves" (the JORC Code). He has more than five years of experience that is relevant to the style of mineralisation and type of deposit described in the announcement and in particular the completion of Mineral Resource Estimates. Mr Jones consents to the inclusion of the information in this report in the form and context in which it appears.

The Root Lake Lithium Project, 100% owned by Ardiden, is about 25km south southwest of the settlement of Slate Falls. It contains spodumene-bearing pegmatites that have been determined to be at least 500m long. Historical work has confirmed significant grades, e.g. up to 5.10% Li₂O. The Root Bay Lithium Project (also 100% owned by Ardiden) is strategically located approximately 5km to the east of the Root Lake Lithium Project and consists of three claim areas and was staked by Ardiden as part of its regional exploration focus in and around the Root Bay spodumene-bearing pegmatite. The presence of spodumene-bearing pegmatites in the project has been confirmed.

The Wisa Lake Lithium Project (100% owned by Ardiden) is located 80km east of Fort Frances, in Ontario, Canada and only 8km north of the Minnesota/USA border. An all-weather road connects the project to Highway 11 (the Trans-Canada Highway), which is located 65km north of the project. Several spodumene-bearing pegmatites are known to outcrop within the project, with some historical drilling having been completed.



ARDIDEN

QUARTERLY TENEMENT SUMMARY

1. The mining tenements held at the end of the quarter and their location.

Gold Projects	Tenement Number/Claim ID	Status	Location	Beneficial Percentage Interest
Pickle Lake - Connections	541336, 541337, 541341, 541344, 541345, 541346, 541350, 541355, 541358, 541359, 541360, 541361, 541366, 536230, 536231, 536232, 536233, 536234, 536235, 536236, 536237, 536238, 536239, 536240, 536241, 536242, 536243, 536244, 536245, 536246, 536247, 536248, 536249, 566571, 566572, 566573, 566574, 566575, 566576, 566577, 566578, 566579, 566580, 566581, 566582, 566583, 566584, 566585, 566586, 566587, 566588, 566589, 566590, 566591, 566592, 566593, 566594, 566595, 566596, 566597, 566598, 566599, 566600, 566601, 566602, 566603, 566604, 566605, 566606, 566607, 566608, 566609, 566610, 566611, 566612, 566613, 566614, 566615, 566616, 566617	Granted	Ontario, Canada	100%
Pickle Lake – Dempster Lake	579770, 579771, 579772, 579773, 579774, 579997, 579998, 580004, 580005, 580006, 580007, 580008, 580009, 580010, 580015, 580016, 580017, 580018, 580019, 580020, 580021, 580022, 580023, 580024, 580025, 580026, 580027, 580028, 580029, 580030, 580031, 580032, 580033, 580034, 580035, 580036, 580037, 580038, 580039, 580040, 580041, 580042, 580043, 580044, 580045, 580046, 580047, 580048, 580049, 580050, 580051, 580052, 580053, 580054, 580055, 580056, 580057, 580058, 580059, 580060, 580061, 580062, 580063, 580064, 580065, 580066, 580067, 580068, 580069, 580070, 580071, 580072, 580073, 580074, 580075, 580076, 580077, 580078, 580079, 580080, 580081, 580082, 580083, 580084, 580085, 580086, 580087, 580088, 580089, 580090, 580091, 580092, 580093, 580094, 580095, 580096, 580097, 580098, 580099, 580100, 580101, 580102, 580103, 580104, 580105, 580106, 580107, 580108, 580109, 580110, 580111, 580112, 580113, 580114, 580115, 580116, 580117, 580118, 580119, 580120, 580121, 580122, 580123, 580124, 580125, 580126, 580127, 580128, 580129, 580130, 580131, 580132, 580133, 580134, 580135, 580136, 580137, 580138, 580139, 580140, 580141, 580142, 580151, 580152, 580153, 580154, 580155, 580156, 580189, 580190, 580295, 580296, 580297, 580298, 580299, 580300, 580301, 580302, 580303, 580304, 580305, 580306, 580307, 580308, 580309, 580310, 580311, 580312, 580313, 580314, 580315, 580316, 580317, 580318, 580319, 580320, 580321, 580322, 580323, 580324, 580325, 580326, 580327, 580328, 580329, 580330, 580331, 580332, 580333, 580334, 580335, 580336, 580337, 580338, 580339, 580340, 580341, 580342, 580343, 580344	Granted	Ontario, Canada	100%
Pickle Lake – Dorothy Dobie	104984, 105912, 106176, 106277, 106701, 108546, 108547, 110665, 112086, 112889, 112990, 123364, 124723, 128625, 129964, 130012, 130849, 130944, 130945, 131221, 133040, 133429, 134232, 134448, 134753, 135762, 136226, 140102, 140103, 140104, 141205, 143008, 143009, 145694, 146037, 146857, 146858, 147714, 149493, 149494, 150199, 150524, 150822, 150823, 154016, 154661, 155274, 156088, 157127, 159811, 161295, 161344, 161961, 162581, 162582, 163914, 163956, 166547, 166548, 168691, 169333, 169948, 176602, 176661, 176770, 176793, 176991, 178279, 178630, 178776, 181433, 181634, 183363, 183657, 183658, 183659, 183660, 183661, 183802, 186059, 186838, 186839, 186840, 187792, 187793, 192633, 193812, 195459, 195771, 196502, 200893, 201767, 205183, 205184, 205185, 207317, 207318, 208735, 208736, 209087, 212985, 213019, 213020, 214000,	Granted	Ontario, Canada	100%



ARDIDEN

Gold Projects	Tenement Number/Claim ID	Status	Location	Beneficial Percentage Interest
	214531, 215430, 215446, 215505, 217414, 221873, 223180, 223229, 225203, 231209, 231210, 231211, 233344, 234028, 234647, 235998, 236504, 236505, 236506, 236858, 237737, 237738, 242025, 242026, 242027, 242865, 242885, 245369, 246370, 246778, 248523, 250184, 250376, 250377, 250729, 250918, 250919, 250920, 251226, 251227, 252855, 253832, 253833, 253834, 254138, 254139, 254140, 255485, 255486, 257815, 257816, 261457, 261968, 262541, 265913, 265914, 269312, 269419, 272648, 273934, 273935, 274481, 277187, 279407, 279431, 279432, 282045, 282178, 282650, 284007, 287953, 287954, 289318, 290701, 292076, 292077, 292078, 297909, 297946, 298040, 299720, 299721, 300389, 301466, 302098, 302509, 302510, 303780, 308300, 308702, 308703, 308704, 310059, 310268, 310973, 311804, 316960, 316961, 316984, 316985, 317711, 319530, 319856, 322018, 323277, 323278, 323279, 329251, 329351, 332358, 333405, 334448, 336319, 336320, 337656, 337657, 337827, 337828, 338360, 340200, 340994, 342957, 343786, 343787, 343788, 566618, 566619, 566620, 566621, 566622, 566623, 566624, 566625, 566626, 566627, 566628, 566629, 566630, 566631, 566632, 566633, 566634, 566635, 566636, 566637, 566638, 566639, 566640, 566641, 566642, 566643, 566644, 566645, 566646, 566647, 566648, 566649, 566650, 566651, 566652, 566653, 566654, 566655, 566656, 566657, 566658, 566659, 566660, 566661, 566662, 566663, 566664, 566935, 566936, 566937, 566938, 566939, 566940, 566941, 566942, 566943, 566944, 566945, 566946, 566947, 566948, 566949, 566950, 566951, 566952, 566953, 566954, 566955, 566956, 566957, 566958, 566959, 566960, 566961, 566962, 566963, 566964, 566965, 566966, 566967, 566968, 566969, 566970, 566971, 566972, 566973, 566974, 566975, 566976, 566977, 566978, 566979, 566980, 566981, 566982, 566983, 566984			
Pickle Lake – Duffell Lake	579696, 579697, 579698, 579699, 579700, 579701, 579702, 579703, 579704, 579705, 579706, 579707, 579708, 579709, 579710, 579711, 579712, 579713, 579714, 579715, 579716, 579717, 579718, 579719, 579720, 579721, 579722, 579723, 579724, 579725, 579726, 579727, 579728, 579729, 579730, 579731, 579732, 579733, 579734, 579735, 579736, 579737, 579738, 579739, 579740, 579741, 579742, 579743, 579744, 579745, 579746, 579747, 579748, 579749, 579750, 579751, 579752, 579753, 579754, 579755, 579756, 579757, 579758, 579759, 579760, 579761, 579762, 579763, 579764, 579765, 579766, 579767, 579768, 579769, 579993, 579994, 579995, 579996, 579999, 580000, 580001, 580002, 580003, 580011, 580012, 580013, 580014	Granted	Ontario, Canada	100%
Pickle Lake – Fry-McVeen	581408, 581409, 581410, 581411, 581412, 581413, 581414, 581415, 581416, 581417, 581418, 581419, 581420, 581421, 581422, 581423, 581424, 581425, 581426, 581427, 581428, 581429, 581430, 581431, 581432, 581433, 581434, 581435, 581436, 581437, 581438, 581439, 581440, 581441, 581442, 581443, 581444, 581445, 581446, 581447, 581448, 581449, 581450, 581451, 581452, 581453, 581454, 581455, 581456, 581457, 581458, 581459, 581460, 581461, 581462, 581463, 581464, 581465, 581466, 581467, 581468, 581469, 581470, 581471, 581472, 581473, 581474, 581475, 581476, 581477, 581478, 581479, 581480, 581481, 581482, 581483, 581484, 581485, 581486, 581487, 581488, 581489, 581490, 581491, 581492, 581493, 581494, 581495, 581496, 581497, 581498, 581499, 581500, 581501, 581502, 581503, 581504, 581505, 581506, 581507, 581508, 581509, 581510, 581511, 581512, 581513, 581514, 581515, 581516, 581517, 581518, 581519,	Granted	Ontario, Canada	100%



ARDIDEN

Gold Projects	Tenement Number/Claim ID	Status	Location	Beneficial Percentage Interest
	581520, 581521, 581522, 581523, 581524, 581525, 581526, 581527, 581528, 581529, 581530, 581531, 581532, 581533, 581534, 581535, 581536, 581537, 581538, 581539, 581540, 581541, 581542, 581543, 581544, 581545, 581546, 581547, 581548, 581549, 581550, 581551, 581552, 581553, 581554, 581555, 581556, 581557, 581558, 581559, 581560, 581561, 581562, 581563, 581564, 581565, 581566, 581567, 581568, 581569, 581570, 581571, 581572, 581573, 581574, 581575, 581576, 581577, 581578, 581579, 581580, 581581, 581582, 581583, 581584, 581585, 581586, 581587, 581588, 581589, 581590, 581591, 581592, 581593, 581594, 581595, 581596, 581597, 581598, 581599, 581600, 581601, 581602, 581603, 581604, 581605, 581606, 581607, 581608, 581609, 581610, 581611, 581612, 581613, 581614, 581615, 581616, 581617, 581618, 581619, 581620, 581621, 581622, 581623, 581624, 581625, 581626, 581627, 581628, 581629, 581630, 581631, 581632, 581633, 581634, 581635, 581636, 581637, 581638, 581639, 581640, 581641, 581642, 581643, 581644, 581645, 581646, 581647, 581648, 581649, 581650, 581651, 581652, 581653, 581654, 581655, 581656, 581657, 581658, 581659, 581660, 581661, 581662, 581663, 581664, 581665, 581666, 581667, 581668, 581669, 581670, 581671, 581672, 581673, 581674, 581675, 581676, 581677, 581678, 581679, 581680, 581681, 581682, 581683, 581684, 581685, 581686, 581687, 581688, 581689, 581690, 581691, 581692, 581693, 581694, 581695, 581696, 581697, 581698, 581699, 581700, 581701, 581702, 581703, 581704, 581705, 581706, 581707, 581708, 581709, 581710, 581711, 581712, 581713, 581714, 581715, 581716, 581717, 581718, 581719, 581720, 581721, 581722, 581723, 581724, 581725, 581726, 581727, 581728, 581729, 581730, 581731, 581732, 581733, 581734, 581735, 581736, 581737, 581738, 581739, 581740, 581741, 581742, 581743, 581744, 581745, 581746, 581747, 581748, 581749, 581750, 581751, 581752, 581753, 581754, 581755, 581756, 581757, 581758, 581759, 581760, 581761, 581762, 581763, 581764, 581765, 581766, 581767, 581768, 581769, 581770, 581771, 581772, 581773, 581774, 581775, 581776, 581777, 581778, 581779, 581780, 581781, 581782, 581783, 581784, 581785, 581786, 581787, 581788, 581789, 581790, 581791, 581792, 581793, 581794, 581795, 581796, 581797, 581798, 581799, 581800, 581801, 581802, 581803, 581804, 581805, 581806, 581807, 581808, 581809, 581810, 581811, 581812, 581813, 581814, 581815, 581816, 581817, 581818, 581819, 581820, 581821, 581822, 581823, 581824, 581825, 581826, 581827, 581828, 581829, 581830, 581831, 581832, 581833, 581834, 581835, 581836, 581837, 581838, 581839, 581840, 581841, 581842, 581843, 581844, 581845, 581846, 581847, 581848, 581849, 581850, 581851, 581852, 581853, 581854, 581855, 581856, 581857, 581858, 581859, 581860, 581861, 581862, 581863, 581864, 581865, 581866, 581867, 581868, 581869, 581870, 581871, 581872, 581873, 581874, 581875, 581876, 581877, 581878, 581879, 581880, 581881, 581882, 581883, 581884, 581885, 581886, 581887, 581888, 581889, 581890, 581891, 581892, 581893, 581894, 581895, 581896, 581897, 581898, 581899, 581900, 581901, 581902, 581903, 581904, 581905, 581906, 581907, 581908, 581909, 581910, 581911, 581912, 581913, 581914, 581915, 581916, 581917, 581918, 581919, 581920, 581921, 581922, 581923, 581924, 581925, 581926, 581927, 581928, 581929, 581930, 581931, 581932, 581933, 581934, 581935, 581936, 581937, 581938, 581939, 581940, 581941, 581942, 581943, 581944, 581945, 581946, 581947, 581948, 581949, 581950, 581951, 581952, 581953, 581954, 581955, 581956, 581957, 581958, 581959, 581960, 581961, 581962, 581963, 581964, 581965.			



ARDIDEN

Gold Projects	Tenement Number/Claim ID	Status	Location	Beneficial Percentage Interest
	581966, 581967, 581968, 581969, 581970, 581971, 581972, 581973, 581974, 581975, 581976, 581977, 581978, 581979, 581981, 581982, 581983, 581984, 581985, 581986, 581987, 581988, 581989, 581990, 581991, 581992, 581993, 581994, 581995, 581996, 581997, 581998, 581999, 582000, 582001, 582002, 582003, 582004, 582005, 582006, 582007, 582008, 582009, 582010, 582011, 582012, 582013, 582014, 582015, 582016, 582017, 582018, 582019, 582020, 582021, 582022, 582023, 582024, 582025, 582026, 582027, 582028, 582029, 582030, 582031, 582032, 582033, 582034, 582035, 582036, 582037, 582038, 582039, 582040, 582041, 582042, 582043, 582044, 582045, 582046, 582047, 582048, 582049, 582050, 582051, 582052, 582053, 582054, 582055, 582056, 582057, 582058, 582059, 582060, 582061, 582062, 582063, 582064, 582065, 582066, 582067, 582068, 582069, 582070, 582071, 582072, 582073, 582074, 582075, 582076, 582077, 582078, 582079, 582080, 582081, 582082, 582083, 582084, 582085, 582086, 582087, 582088, 582089, 582090, 582091, 582092, 582093, 582094, 582095, 582096, 582097, 582098, 582099, 582100, 582101, 582102, 582103, 582104, 582105, 582106, 582107, 582108, 582109, 582110, 582111, 582112, 582113, 582114, 582115, 582116, 582117, 582118, 582119, 582120, 582121, 582122, 582123, 582124, 582125, 582126, 582127, 582128, 582129, 582130, 582131, 582132, 582133, 582134, 582135, 582136, 582137, 582138, 582139, 582140, 582141, 582142, 582143, 582144, 582145, 582146, 582147, 582148, 582149, 582150, 582151, 582152, 582153, 582154, 582155, 582156, 582157, 582158, 582159, 582160, 582161, 582162, 582163, 582164, 582165, 582166, 582167, 582168, 582169, 582170, 582171, 582172, 582173, 582174, 582175, 582176, 582177, 582178, 582179, 582180, 582181, 582182, 582183, 582184, 582185, 582186, 582187, 582188, 582189, 582190, 582191, 582192, 582193, 582194, 582195, 582196, 582197, 582198, 582199, 582200, 582201, 582202, 582203, 582204, 582205, 582206, 582207, 582208, 582209, 582210, 582211, 582212, 582213, 582214, 582215, 582216, 582217, 582218, 582219, 582220, 582221, 582222, 582223, 582224, 582225, 582226, 582227, 582228, 582229, 582230, 582231, 582232			
Pickle Lake – Jean Lake	574692, 574693, 574694, 574695, 574696, 574697, 574698, 574699, 574700, 574701, 574702, 574703, 574704, 574705, 574706, 574707, 574708, 574709, 574710, 574711, 574712, 574713, 574714, 574715, 574716, 574717, 574718, 574719, 574720, 574721, 574730, 574734, 574735, 574736, 574737, 574738, 574739, 574740, 574741, 574792, 574793, 574794, 574795, 574796, 574797, 574798, 574799, 574800, 574801, 574802, 574803, 574804, 574805, 574806, 574807, 574808, 574809, 574810, 574811, 574812, 574813, 574814, 574815, 574816, 574817, 574818, 574819, 574820, 574821, 574822, 574823, 574824, 574825, 574826, 574827, 574828, 574829, 574830, 574831, 574832, 574833, 574834, 574835, 574836, 574837, 574838, 574839, 574840, 574841, 574864, 574865, 574866, 574867, 574868, 574869, 574870	Granted	Ontario, Canada	100%
Pickle Lake – Kasagiminnis	107775, 110169, 122181, 122182, 122183, 122898, 122899, 124715, 124716, 124717, 133631, 136219, 136220, 136221, 141049, 142242, 178845, 178846, 181427, 186270, 187592, 188198, 198429, 198430, 199793, 200883, 236848, 236849, 253606, 253607, 254414, 265109, 266397, 281542, 282778, 289590, 290904, 290905, 292065, 292066, 301653, 310309, 310310, 310311, 310962, 319583, 340456, 341762, 341763	Granted	Ontario, Canada	100%



ARDIDEN

Gold Projects	Tenement Number/Claim ID	Status	Location	Beneficial Percentage Interest
Pickle Lake – Kawashe Lake	574871, 574872, 574873, 574874, 574875, 574876, 574877, 574878, 574879, 574880, 574881, 574882, 574883, 574884, 574885, 574886, 574887, 574888, 574889, 574890, 574891, 574892, 574893, 574894, 574895, 574896, 574897, 574898, 574899, 574900, 574901, 574902, 574903, 574904, 574905, 574906, 574907, 574908, 574909, 574910, 574911, 574912, 574913, 574914, 574915, 574916, 574917, 574918, 574919, 574920, 574921, 574922, 574923, 574924, 574925, 574926, 574927, 574928, 574929, 574930, 574931, 574932, 574933, 574934, 574935, 574936, 574937, 574938, 574939, 574940, 574941, 574942, 574943, 574944, 574945, 574946, 574947, 574948, 574949, 574950, 574951, 574952, 574953, 574954, 574955, 574956, 574957, 574958, 574959, 574960, 574961, 574962, 574963, 574964, 574965, 574966, 574967, 574968, 574969, 574970, 574971, 574972, 574973, 574974, 574975, 574976, 574977, 574978, 574979, 574980, 574981, 574982, 574983, 574984, 574985, 574986, 574987, 574988, 574989, 574990, 574991, 574992, 574993, 574994, 574995, 574996, 574997, 574998, 574999, 575000, 575001, 575002, 575003, 575004, 575005, 575006, 575007, 575008, 575009, 575010, 575011, 575012, 575013, 575014, 575015, 575016, 575017, 575018, 575019, 575020, 575021, 575022, 575023, 575024, 575025, 575026, 575027, 575028, 575029, 575030, 575031, 575032, 575033, 575034, 575035, 575036, 575037, 575038, 575039, 575040, 575041, 575042, 575043, 575044, 575045, 575046, 575047, 575048, 575049, 575050, 575051, 575052, 575053, 575054, 575055, 575056, 575057, 575058, 575059, 575060, 575061, 575062, 575063, 575064, 575065, 575066, 575067, 575068, 575069, 575070, 575071, 575072, 575073, 575074, 575075, 575076, 575077, 575078, 575079, 575080, 575081, 575082, 575083, 575084, 575085, 575086, 575087, 575088, 575089, 575090, 575091, 575092, 575093, 575094, 575095, 575096, 575097, 575098, 575099, 575100, 575101, 575102, 575103, 575104, 575105, 575106, 575107, 575108, 575109, 575110, 575111, 575112, 575113, 575114, 575115, 575116, 575117, 575118, 575119, 575120, 575121, 575122, 575123, 575124, 575125, 575126, 575127, 575128, 575129, 575130, 575131, 575132, 575133, 575134, 575135, 575136, 575137, 575138, 575139, 575140, 575141, 575142, 575143, 575144, 575145, 575146, 575147, 575148, 575149, 575150, 575151, 575152, 575153, 575154, 575155, 575156, 575157, 575158, 575159, 575160, 575161, 575162, 575163, 575164, 575165, 575166, 575167, 575168, 575169, 575170, 575171, 575172, 575173, 575174, 575175, 575176, 575177, 575178, 575179, 575180, 575181, 575182, 575183, 575184, 575185, 575186, 575187, 575188, 575189, 575190, 575191, 575192, 575193, 575194, 575195, 575196, 575197, 575198	Granted	Ontario, Canada	100%
Pickle Lake – Keating Lake	574492, 574493, 574494, 574495, 574496, 574497, 574498, 574499, 574500, 574501, 574502, 574503, 574504, 574505, 574506, 574507, 574508, 574509, 574510, 574511, 574512, 574513, 574514, 574515, 574516, 574517, 574518, 574519, 574520, 574521, 574522, 574523, 574524, 574525, 574526, 574527, 574528, 574529, 574530, 574531, 574532, 574533, 574534, 574535, 574536, 574537, 574538, 574539, 574540, 574541, 574542, 574543, 574544, 574545, 574546, 574547, 574548, 574549, 574550, 574551, 574552, 574553, 574554, 574555, 574556, 574557, 574558, 574559, 574560, 574561, 574562, 574563, 574564, 574565, 574566, 574567, 574568, 574569, 574570, 574571, 574572, 574573, 574574, 574575, 574576, 574577, 574578, 574579, 574580, 574581, 574582, 574583, 574584, 574585, 574586, 574587,	Granted	Ontario, Canada	100%



ARDIDEN

Gold Projects	Tenement Number/Claim ID	Status	Location	Beneficial Percentage Interest
	574588, 574589, 574590, 574591, 574722, 574723, 574724, 574725, 574726, 574727, 574728, 574729, 574731, 574732, 574733, 579929, 579930, 579931, 579932, 579933, 579934, 579935, 579936, 579937, 579938, 579939, 579940, 579941, 579942, 579943, 579944, 579945, 579946, 579947, 579948, 579949, 579950, 579951, 579952, 579953, 579954, 579955, 579956, 579957, 579958, 579959, 579960, 579961, 579962, 579963, 579964, 579965, 579966, 579967, 579968, 579969, 579970, 579971, 579972, 579973, 579974, 579975, 579976, 579977, 579978			
Pickle Lake – Meen Lake	579775, 579776, 579777, 579778, 579779, 579780, 579781, 579782, 579783, 579784, 579785, 579786, 579787, 579788, 579789, 579790, 579791, 579792, 579793, 579794, 579795, 579796, 579797, 579798, 579799, 579800, 579801, 579802, 579803, 579804, 579805, 579806, 579807, 579808, 579809, 579810, 579811, 579812, 579813, 579814, 579815, 579816, 579817, 579818, 579819, 579820, 579821, 579822, 579823, 579824, 579825, 579826, 579827, 579828, 579829, 579830, 579831, 579832, 579833, 579834, 579835, 579836, 579837, 579838, 579839, 579840, 579841, 579842, 579843, 579844, 579845, 579846, 579847, 579848, 579849, 579850, 579851, 579852, 579853, 579854, 579855, 579856, 579857, 579858, 579859, 579860, 579861, 579862, 579863, 579864, 579865, 579866, 579867, 579868, 579869, 579870, 579871, 579872, 579873, 579874, 579875, 579876, 579877, 579878, 579879, 579880, 579881, 579882, 579883, 579884, 579885, 579886, 579887, 579888, 579889, 579890, 579891, 579892, 579893, 579894, 579895, 579896, 579897, 579898, 579899, 579900, 579901, 579902, 579903, 579904, 579905, 579906, 579907, 579908, 579909, 579910, 579911, 579912, 579913, 579914, 579915, 579916, 579917, 579918, 579919, 579920, 579921, 579922, 579923, 579924, 579925, 579926, 579927, 579928	Granted	Ontario, Canada	100%
Pickle Lake – New Patricia	131784, 147867, 147868, 147869, 147870, 147871, 159805, 161958, 184465, 193806, 196500, 211821, 214522, 214523, 214524, 240460, 248516, 248517, 248518, 248519, 251221, 260527, 300387, 315009, 315010, 315011, 317709, 329913, 329914, 329915, 329916, 335930, 339299, 500919, 500920, 500921, 500922, 500923, 500924, 500925, 500926, 500927, 500928, 500929, 500930, 500931, 500932, 500933, 500934, 500935, 500936, 500937, 500938, 500939, 500940, 500941, 500942, 500943, 500944, 500945, 500946, 500947, 500948, 500949, 500950, 500951, 500952, 500953, 500954, 500955, 500956, 500957, 500958, 500959, 500960, 500961, 500962, 500963, 500964, 500965, 500966, 500967, 500968, 500969, 500970, 500971, 500972, 500973, 500974, 500975, 500976, 500977, 500978, 500979, 500980, 500981, 500982, 500983, 500984, 500985, 500986, 500987, 500988, 500989, 500990, 500991, 500992, 500993, 500994, 500995, 500996, 500997, 500998, 500999, 501000, 501001, 501002, 501003, 501004, 501005, 501006, 501007, 501008, 501009, 501010, 501011, 501012, 501013, 501014, 501015, 501016, 501017, 501018, 501142, 501143, 501144, 501145, 501146, 501147, 501148, 501149, 501150, 501151, 501152, 501153, 501154, 501155, 501156, 501157, 501158, 501159, 501160, 501161, 501162, 501163, 501164, 501165, 501166, 501167, 501168, 501169, 501170, 501171, 501172, 501173, 501174, 501175, 501176, 501177, 501178, 501179, 501180, 501181, 501182, 501183, 501184, 501185, 501186, 501187, 501188, 501189, 501190, 501191, 501210, 501211, 501212, 501213, 501214, 501215, 501216, 501217, 501218,	Optioned	Ontario, Canada	100%



ARDIDEN

Gold Projects	Tenement Number/Claim ID	Status	Location	Beneficial Percentage Interest
	501219, 501220, 501221, 501222, 501223, 501224, 501225, 501226, 501227, 501228, 501229, 501230, 501231, 501232, 501233, 501234, 501235, 501236, 501237, 501238, 501239, 501240, 501241, 501242, 501243, 501244, 501245, 501246, 501247, 501248, 501249, 501250, 501251, 501252, 501253, 501254, 501255, 501256, 501257, 501258, 501259, 501292, 501293, 501294, 501295, 501296, 501297, 501298, 501299, 501300, 501301, 501302, 501303, 501304, 501305, 501306, 501307, 501308, 501309, 501310, 501311, 501312, 501313, 501314, 501315, 501316, 501317, 501318, 501319, 501320, 501321, 501322, 501323, 501324, 501325, 501326, 501327, 501328, 501329, 501330, 501331, 501332, 501333, 501339, 501340, 501341, 501342, 501343, 501344, 501345, 501346, 501347, 501348, 501349, 501350, 501351, 501352, 501353, 501354, 501355, 501356, 501357, 501358, 501359, 501360, 501361, 501362, 501363, 501364, 501365, 501366, 501367, 501368, 501369, 501370, 501371, 501372, 501373, 501374, 501375, 501376, 501377, 501378, 501379, 501380, 501381, 501382, 501383, 501384, 501385, 501386, 501387, 501388, 501527, 501528, 501529, 501530, 501531, 501532, 501533, 501534, 501535, 501536, 501537, 501538, 501539, 501540, 501541, 501542, 501543, 501544, 501545, 501546, 501547, 501548, 501549, 501550, 501551, 501552, 501568, 501569, 501570, 501571, 501572, 501573, 501574, 501575, 501576, 501577, 501578, 501579, 501580, 501581, 501582, 501583, 501584, 501585, 501586, 501587, 501588, 501589, 501590, 501591, 501592, 501593, 501594, 501595, 501596, 501597, 501598, 501599, 501600, 501601, 501602, 501603, 501604, 501605, 501606, 501607, 501608, 501609, 501610, 501611, 501612, 501613, 501614, 501615, 501616, 501617, 501814, 501815, 501816, 501817, 501818, 501819, 501820, 501821, 501822, 501823, 501824, 501825, 501826, 501827, 501828, 501829, 501830, 501831, 501832, 501833, 501834, 501835, 501836, 501837, 501838, 501839, 501840, 501841, 501842, 501843, 501844, 501845, 501846, 501847, 501848, 501849, 501850, 501851, 501852, 501853, 501854, 501855, 501856, 501857, 501858, 501859, 501860, 501861, 501862, 501863, 502011, 502012, 502013, 502014, 502015, 502016, 502017, 502018, 502019, 502020, 502021, 502022, 502023, 502024, 502025, 502026, 502027, 502028, 502029, 502030, 502031, 502032, 502033, 502034, 502035, 502036, 502037, 502038, 502039, 502040, 502041, 502042, 502043, 502044, 502045, 502046, 502047, 502048, 502049, 502050, 502051, 502052, 502053, 502054, 502055, 502056, 502057, 502058, 502059, 502060, 502132, 502133, 502134, 502135, 502136, 502137, 502138, 502139, 502140, 502141, 502142, 502143, 502144, 502145, 502146, 502147, 502148, 502149, 502150, 502151, 502152, 502153, 502154, 502155, 502156, 502157, 502158, 502159, 502160, 502161, 502162, 502163, 502164, 502165, 502166, 502167, 502168, 502169, 502170, 502171, 502172, 502173, 502174, 502175, 502176, 502177, 502178, 502179, 502180, 502181, 502227, 502229, 502231, 502232, 502234, 502236, 502238, 502240, 502241, 502243, 502245, 520337, 520338, 520339, 520340, 520935, 520936, 520937, 520938, 520939, 520940, 520941, 520942, 520943, 520944, 520945, 520946, 520947, 520948, 520949, 520950, 520951, 520952, 520953, 520954, 520955, 520956, 520957, 520958, 520959, 520960, 520961, 520962, 520963, 520964, 520965, 520966, 520967, 520968, 520969, 520970, 520971, 520972, 520973, 520974, 520975, 520976, 520977, 520978, 520979, 520980, 520981, 520982, 520983, 520984,			



ARDIDEN

Gold Projects	Tenement Number/Claim ID	Status	Location	Beneficial Percentage Interest
	520985, 520986, 520987, 520988, 520989, 520990, 520991, 520992, 520993, 520994, 520995, 520996, 520997, 520998, 520999, 521000, 521001, 521002, 521003, 521004, 521005, 521006, 521007, 521008, 521009, 521010, 521011, 521012, 521013, 521014, 521015, 521016, 521017, 521018, 521019, 521020, 521021, 521022, 521023, 521024, 521025, 521026, 521027, 521028, 521029, 521030, 521031, 521032, 521033, 521034, 521035, 521036, 521037, 521038, 521039, 521040, 521041, 521042, 521043, 521044, 521045, 521046			
Pickle Lake – Reylea Lake	580157, 580158, 580159, 580160, 580161, 580162, 580163, 580164, 580165, 580166, 580167, 580168, 580169, 580170, 580171, 580172, 580173, 580174, 580175, 580176, 580177, 580178, 580179, 580180, 580181, 580182, 580183, 580184, 580185, 580186, 580187, 580188, 580191, 580192, 580193, 580194, 580195, 580196, 580197, 580198, 580199, 580200, 580201, 580202, 580203, 580204, 580205, 580206, 580207, 580208, 580209, 580210, 580211, 580212, 580213, 580214, 580215, 580216, 580217, 580218, 580219, 580220, 580221, 580222, 580223, 580224, 580225, 580226, 580227, 580228, 580229, 580230, 580231, 580232, 580233, 580234, 580235, 580236, 580237, 580238, 580239, 580240, 580241, 580242, 580243, 580244, 580245, 580246, 580247, 580248, 580249, 580250, 580251, 580252, 580253, 580254, 580255, 580256, 580257, 580258, 580259, 580260, 580261, 580262, 580263, 580264, 580265, 580266, 580267, 580268, 580269, 580270, 580271, 580272, 580273, 580274, 580275, 580276, 580277, 580278, 580279, 580280, 580281, 580282, 580283, 580284, 580285, 580286, 580287, 580288, 580289, 580290, 580291, 580292, 580293, 580294	Granted	Ontario, Canada	100%
Pickle Lake – South Limb	100831, 101396, 101525, 101526, 102692, 102906, 116721, 118004, 118221, 121656, 121657, 125050, 125051, 125052, 125053, 125760, 125761, 125762, 129676, 160810, 164956, 166176, 166304, 166305, 169680, 169681, 173060, 178291, 178314, 178995, 178996, 178997, 179657, 189146, 189147, 189148, 194187, 194210, 194211, 194935, 194936, 194937, 195563, 218371, 219081, 224876, 225586, 225587, 225588, 226523, 226524, 226525, 227088, 231687, 232868, 260845, 262197, 262198, 265588, 266276, 266277, 266278, 268320, 268321, 268322, 273549, 273550, 281607, 282260, 282261, 285637, 285770, 289638, 289639, 293068, 293069, 293146, 293147, 297669, 297670, 321676, 321677, 322315, 328186, 328833, 328834, 328835, 341207, 341208, 535546, 535547, 535548, 535549, 535550, 535551, 535552, 535553, 535554, 535555, 535556, 535557, 551427, 562023, 562024, 562025, 562026	Granted	Ontario, Canada	100%
Pickle Lake – Two Fifty	541335, 541338, 541339, 541340, 541342, 541343, 541347, 541348, 541349, 541351, 541352, 541353, 541354, 541356, 541357, 541362, 541363, 541364, 541365, 541367, 541368, 541369, 541370, 541371, 541372, 541373, 541374, 541376, 541377, 541378, 541379, 541380, 541381, 541382, 541383, 541384, 541385, 541387, 541388, 541389, 541390, 541391, 541392, 541393, 541394, 541395, 541396, 541397, 541398, 541399, 541400, 541401, 562623, 562624, 562625, 562626, 562627, 562628, 562629, 562630, 562631, 562632, 562633, 562634, 562635, 562637, 562638, 562639, 562640, 562641, 562642, 562643, 562644, 562645, 562646, 562647	Granted	Ontario, Canada	100%
Pickle Lake – West Pickle	104760, 104916, 104917, 104918, 104919, 104920, 105656, 105657, 120067, 120068, 126563, 128549, 128550, 138039, 139349, 147534, 147535, 147536, 155122, 155325, 165265, 171104, 171105, 171106, 171107, 173237, 173238, 176769, 184045, 187800, 191356, 191357,	Granted	Ontario, Canada	100%



ARDIDEN

Gold Projects	Tenement Number/Claim ID	Status	Location	Beneficial Percentage Interest
	199313, 199314, 199962, 207329, 227360, 227361, 236415, 239988, 248070, 248771, 248772, 250862, 256698, 256699, 266552, 267218, 267219, 273313, 285880, 285881, 287193, 293994, 295326, 295992, 300139, 303169, 306594, 316767, 316768, 320515, 323119, 325091, 325092, 333749, 333750, 333751, 335552, 336241, 336242, 338336, 345540, 345541, 345542, 345543, 541375, 541386			

Lithium Projects	Tenement Number/Claim ID	Status	Location	Beneficial Percentage Interest
Root Bay	101422, 101696, 117902, 121020, 121020, 121042, 122349, 122350, 122351, 122351, 124441, 152951, 160964, 160965, 160966, 166199, 169575, 179044, 179045, 182367, 194973, 196921, 214118, 214119, 217760, 225637, 225637, 225638, 233675, 261574, 262879, 269563, 269564, 269564, 272959, 281639, 281640, 285014, 290289, 290289, 290290, 290290, 298950, 321059, 321565, 328205, 328206, 328225, 328226, 329530, 329531, 340566, 340566, 340588, 340589, 341368, 341368, 341369, 341370	Granted	Ontario, Canada	100%
Root Lake	553204, 553205, 553206, 553207, 553208, 553209, 553210, 553211, 553212, 553213, 553214, 553215, 553216, 553217, 553218, 101503, 101504, 116836, 121133, 121134, 160180, 160180, 160270, 166201, 166202, 166203, 166284, 179021, 214121, 214122, 214123, 214216, 214217, 214218, 232916, 232916, 232917, 232917, 232988, 232989, 269553, 269630, 282239, 289614, 298925, 298925, 298926, 298926, 298927, 298947, 298947, 298948, 328813, 340586, 340587, 340676	Ontario, Canada	Ontario, Canada	100%
Seymour Lake	305606, 305606, 312405, 312405, 110794, 257034, 202394, 269391, 239142, 199576, 209207, 209206, 102009, 103639, 108167, 109057, 109058, 109882, 109882, 109882, 109883, 109884, 110535, 110795, 110795, 110795, 110796, 110796, 111208, 111208, 111240, 111512, 112597, 114199, 114200, 115999, 115999, 116000, 116000, 116001, 118922, 118922, 120826, 120826, 122538, 122538, 123189, 123189, 125514, 126089, 126089, 126089, 126090, 128849, 130705, 130706, 132743, 132743, 132743, 134452, 137057, 137595, 137595, 139233, 139233, 140447, 140448, 142382, 142382, 142383, 142384, 143993, 144333, 144333, 145302, 146398, 147129, 147129, 147130, 147644, 147644, 147645, 147645, 149178, 149204, 150834, 150834, 150834, 152639, 152695, 152695, 154018, 154018, 157231, 157231, 158455, 158455, 158455, 158456, 158595, 158595, 158595, 158701, 158702, 158739, 158739, 159350, 161036, 161036, 161036, 161037, 161037, 161227, 161228, 161676, 161676, 161676, 164044, 164290, 164290, 164291, 164291, 164672, 165944, 166147, 167316, 167331, 167331, 167714, 167714, 171277, 174901, 174901, 176401, 176401, 176401, 177476, 177476, 177615, 182257, 182257, 182794, 182795, 182795, 182795, 182796, 182796, 182796, 183014, 183611, 183611, 183612, 183612, 184741, 184741, 184742, 184742, 186421, 186421, 186421, 186458, 186459, 186558, 186558, 186683, 186683, 186849, 186850, 186850, 186850, 189693, 189693, 190097, 190097, 190098, 190099, 191608, 192878, 192879, 192879, 193064, 193065, 195436, 196429, 196429, 197307, 197308, 199575, 201118, 201239, 202392, 202392, 202392, 202393, 202393, 204013, 206643, 209269, 210680, 210717, 211639, 211639, 212521, 213762, 213972, 216046, 216480, 216480, 216480, 216480, 219380, 219487, 219487, 224207, 224208, 226787, 226788, 226788, 228166, 228166, 228166, 230975, 230976, 232543,	Ontario, Canada	Ontario, Canada	100%



ARDIDEN

Lithium Projects	Tenement Number/Claim ID	Status	Location	Beneficial Percentage Interest
	232543, 232544, 233869, 233869, 233870, 233870, 233871, 233871, 234515, 234515, 234658, 234658, 237862, 238118, 238118, 238343, 238343, 238343, 239069, 239069, 239197, 239197, 244708, 244708, 246792, 246792, 247152, 247930, 247931, 250469, 250469, 252479, 252530, 252702, 252702, 252702, 252703, 252704, 252704, 252704, 252705, 252705, 252705, 252705, 255760, 255900, 256854, 257033, 257033, 257033, 257911, 257911, 257911, 259408, 259409, 261948, 264527, 264527, 264569, 264570, 265918, 265918, 268004, 270371, 270371, 270371, 270372, 270372, 271256, 271256, 271302, 271759, 275234, 276648, 277335, 277335, 278196, 278197, 280559, 280560, 280561, 280561, 282491, 282491, 282491, 282661, 282662, 285387, 289913, 289913, 289913, 289914, 290555, 290713, 292949, 292949, 293546, 293546, 297013, 297013, 302513, 304354, 306092, 306092, 306359, 306359, 306504, 307057, 312238, 312772, 312773, 312836, 312836, 313281, 313660, 313660, 313661, 313661, 313805, 313806, 313806, 313807, 313807, 313967, 316941, 317425, 317425, 317425, 318517, 322021, 325851, 326498, 326498, 326802, 327346, 327347, 328430, 328430, 329159, 329160, 331205, 331205, 331233, 332326, 332327, 336637, 337814, 337815, 338473, 338473, 338554, 339017, 339018, 341504, 341504, 341621, 342142, 342142, 342143, 342143, 343145, 343145, 343146, 343147, 343884, 343884, 344314, 344314, 344315, 518640, 518641, 518646, 518652, 518659, 518660, 518666, 518667, 518668, 518673, 518674, 518675, 518676, 518680, 518681, 518682, 518683, 518685, 518686, 519760, 519761, 519762, 519763, 519764, 519765, 519766, 519767, 519768, 519769, 519770, 519771, 519772, 519773, 519774, 519775, 519776, 519777, 519778, 519779, 519780, 519781, 519782, 519783, 519784, 519785, 519786, 519787, 519788, 519789, 519790, 519791, 519792, 519793, 519794, 519795, 519796, 519797, 519798, 519803, 519804, 519805, 519806, 519807, 519808, 519809, 519810, 519811, 519812, 519813, 519814, 519815, 519816, 519817, 519818, 519819, 519820, 519821, 519822, 519823, 519824, 519825, 519826, 519827, 519828, 519829, 519830, 519831, 519832, 519833, 519834, 519835, 519836, 519837, 519838, 519839, 519840, 519841, 519842, 519843, 519844, 519845, 519846, 519847, 519848, 519849, 519850, 519851, 519852, 519853, 519854, 519855, 519856, 519857, 519858, 519859, 519860, 519861, 519862, 519863, 519864, 519865, 519866, 519867, 519868, 519869, 519870, 519871, 519872, 519873, 519874, 519875, 519876, 519877, 519878, 519879, 519880, 519881, 519882, 519883, 519884, 519885, 519886, 519887, 519888, 519889, 519890, 519891, 519892, 519893, 519894, 519895, 519896, 519897, 519898, 519899, 519900, 519901, 519902, 519903, 519904, 519905, 519906, 519907, 519908, 519909, 519910, 519911, 519912, 519913, 519914, 519915, 519916, 519917, 519918, 519919, 519920, 519921, 519922, 519923, 519924, 519925, 519926, 519927, 519928, 519929, 519930, 519935, 519936, 519937, 519938, 519939, 519940, 519941, 519942, 519943, 519944, 519945, 519946, 519947, 519948, 519949, 519950, 519951, 519952, 519953, 519954, 519955, 519956, 519957, 519958, 519959, 519960, 519961, 519962, 519963, 519964, 519965, 519966, 519967, 519968, 519969, 519970, 519971, 519972, 519973, 519974, 519975, 519976, 519977, 519978, 519979, 519980, 519981, 519982, 519983, 519984, 519985, 519986, 519987, 519988, 519989, 519990, 519991, 519992, 519993, 519994, 519995, 519996, 519997, 519998, 519999, 520000, 520001, 520002, 520003, 520004, 520005, 520006, 520007, 520008, 520009, 520010, 520011, 520012, 520013, 520014, 520015, 520016, 520017, 520018, 520019, 520020, 520021, 520022, 520023, 520024, 520025, 520026,			



ARDIDEN

Lithium Projects	Tenement Number/Claim ID	Status	Location	Beneficial Percentage Interest
	520027, 520028, 520029, 520030, 520031, 520032, 520033, 520034, 520035, 520036, 520037, 520038, 520039, 520040, 520041, 520042, 520043, 520044, 520045, 520046, 520047, 520048, 520049, 520050, 520051, 520052, 520053, 520054, 520055, 520056, 520057, 520058, 520059, 520060, 520061, 520062, 520063, 520064, 520065, 520066, 520067, 520068, 520069, 520070, 520071, 520072, 520073, 520074, 520075, 520076, 520077, 520078, 520079, 520080, 520081, 520082, 520083, 520084, 520085, 520086, 520087, 520088, 520089, 520090, 520091, 520092, 520093, 520094, 520095, 520096, 520097, 520098, 520099, 520100, 520101, 520102, 520103, 520104, 520105, 520106, 520107, 520108, 520109, 520110, 520111, 520112, 520113, 520114, 520115, 520116, 520117, 520118, 520119,			
Wisa Lake	113513, 131136, 131136, 145905, 159951, 176985, 176986, 183797, 195845, 195845, 212601, 212614, 213853, 213854, 224167, 224168, 230802, 243004, 250542, 262540, 262540, 269309, 269310, 307936, 308449, 308450, 317062, 327963, 329248, 329248, 338625, 103529, 103529, 118801, 118801, 118802, 133592, 133592, 150259, 161045, 167103, 167103, 178817, 198377, 215841, 215842, 215843, 234393, 244999, 246563, 246564, 252720, 252720, 253045, 253045, 253046, 271771, 271772, 281855, 281855, 281856, 282740, 282741, 289548, 289548, 301603, 301603, 329645, 103846, 118618, 118619, 119131, 119132, 119132, 119133, 129848, 157769, 157769, 164373, 177777, 177777, 177778, 177779, 193276, 193277, 223146, 231115, 231116, 231116, 231808, 243329, 297767, 338787		Ontario, Canada	100%
Root Lake Patents	MLO-13011, MLO-13014, MLO-13016, PAT-51965, PAT-51966, PAT-51967, PAT-51968, PAT-51969, PAT-51970, PAT-51971, PAT-51972, PAT-51973, PAT-51974, PAT-51975, PAT-51976, PAT-51977, PAT-51978, PAT-51979, PAT-51980, PAT-51981, PAT-51982, PAT-51983, PAT-51984, PAT-51985, PAT-51986, PAT-51987, PAT-51988, PAT-51989, PAT-51990, PAT-51991, PAT-51992, PAT-51993, PAT-51994, PAT-51995, PAT-51996, PAT-51997		Ontario, Canada	100%

Graphite Projects	Tenement Number/Claim ID	Status	Location	Beneficial Percentage Interest
Manitouwadge	106808, 109041, 110086, 113625, 113626, 118723, 120303, 128662, 131666, 131972, 134369, 148355, 148356, 148357, 151037, 160975, 162102, 162103, 177448, 178748, 178749, 184310, 185993, 185994, 206507, 206508, 213679, 214769, 215274, 216286, 233311, 233312, 233313, 242045, 245488, 246007, 248870, 251308, 251595, 251596, 251597, 251598, 252658, 252659, 254326, 262718, 265818, 265819, 265820, 270688, 270689, 270690, 271714, 271715, 271716, 271717, 271718, 271719, 280111, 280112, 281804, 281805, 289867, 298697, 299651, 300011, 302379, 302380, 302381, 317648, 317649, 317650, 317651, 318725, 329071, 330634, 330635, 332614, 338507, 338508, 338509		Ontario, Canada	100%

2. Mining tenements acquired during the quarter and their location:



ARDIDEN

Gold Projects	Tenement Number	Status	Location	Beneficial Percentage Interest
Pickle Lake, 250 North	614758, 614759, 614760, 614761, 614762, 614763, 614764, 614765, 614766, 614767, 614768, 614769, 614770, 614771, 614772, 614773, 614774, 614775, 614776, 614777, 614778, 614779, 614780, 614781, 614782, 614783, 614784, 614785, 614786, 614787, 614788, 614789, 614790, 614791, 614792, 614793, 614794, 614795, 614796, 614797, 614798, 614799, 614800, 614801, 614802, 614803, 614804, 614805, 614806, 614807, 614808, 614809, 614810, 614811, 614812, 614813, 614814, 614815, 614816, 614817, 614818, 614819, 614820, 614821, 614822, 614823, 614824, 614825, 614826, 614827, 614828, 614829, 614830, 614831, 614832, 614833, 614834, 614835, 614836, 614837, 614838, 614839, 614840, 614841, 614842, 614843, 614844, 614845, 614846, 614847, 614848, 614849, 614850, 614851, 614852, 614853, 614854, 614855, 614856, 614857, 614858, 614859, 614860, 614861, 614862, 614863, 614864, 614865, 614866, 614867, 614868, 614869, 614870, 614871, 614872, 614873, 614874, 614875, 614876, 614877, 614878, 614879, 614880, 614881, 614882, 614883, 614884, 614885, 614886, 614887, 614888, 614889, 614890, 614891, 614892, 614893, 614894, 614895, 614896, 614897, 614898, 614899, 614900, 614901, 614902, 614903, 614904, 614905, 614906, 614907, 614908, 614909, 614910, 614911, 614912, 614913		Ontario Canada	



ARDIDEN

Pickle Lake, Dorothy-Dobie North	613951, 613952, 613953, 613954, 613955, 613956, 613957, 613958, 613959, 613960, 613961, 613962, 613963, 613964, 613965, 613966, 613967, 613968, 613969, 613970, 613971, 613972, 613973, 613974, 613975, 613976, 613977, 613978, 613979, 613980, 613981, 613982, 613983, 613984, 613985, 613986, 613987, 613988, 613989, 613990, 613991, 613992, 613993, 613994, 613995, 613996, 613997, 613998, 613999, 614000, 614001, 614002, 614003, 614004, 614005, 614006, 614007, 614008, 614009, 614010, 614011, 614012, 614013, 614014, 614015, 614016, 614017, 614018, 614019, 614020, 614021, 614022, 614023, 614024, 614025, 614026, 614027, 614028, 614029, 614030, 614031, 614032, 614033, 614034, 614035, 614036, 614037, 614038, 614039, 614040, 614041, 614042, 614043, 614044, 614045, 614046, 614047, 614048, 614049, 614050, 614051, 614052, 614053, 614054, 614055, 614056, 614057, 614058, 614059, 614060, 614061, 614062, 614063, 614064, 614065, 614066, 614067, 614068, 614069, 614070, 614071, 614072, 614073, 614074, 614075, 614076, 614077, 614078, 614079, 614080, 614081, 614082, 614083, 614084, 614085, 614086, 614087, 614088, 614089, 614090, 614091, 614092, 614093, 614094, 614095, 614096, 614097, 614098, 614099, 614100, 614101, 614102, 614103, 614104, 614105, 614106, 614107, 614108, 614109, 614110, 614111, 614112, 614113, 614114, 614115, 614116, 614117, 614118, 614119, 614120, 614121, 614122, 614123, 614124, 614125, 614126, 614127, 614128, 614129, 614130, 614131, 614132, 614133, 614134, 614135, 614136, 614137, 614138, 614139, 614140, 614141, 614142, 614143, 614144, 614145, 614146, 614147, 614148, 614149, 614150, 614151, 614152, 614153, 614154, 614155, 614156, 614157, 614158, 614159, 614160, 614161, 614162, 614163, 614164, 614165, 614166, 614167, 614168, 614169, 614170, 614171, 614172, 614173, 614174, 614175, 614176, 614177, 614178, 614179, 614180, 614181, 614182, 614183, 614184, 614185, 614186, 614187, 614188, 614189, 614190, 614191, 614192, 614193, 614194, 614195, 614196, 614197, 614198, 614199, 614200, 614201, 614202, 614203, 614204, 614205, 614206, 614207, 614208, 614209, 614210, 614211, 614212, 614213, 614214, 614215, 614216, 614217, 614218, 614219, 614220, 614221, 614222, 614223, 614224, 614225, 614226, 614227, 614228, 614229, 614230, 614231, 614232		Ontario, Canada	
--	--	--	--------------------	--



ARDIDEN

Pickle Lake, Kasagiminnis North	614233, 614234, 614235, 614236, 614237, 614238, 614239, 614240, 614241, 614242, 614243, 614244, 614245, 614246, 614247, 614248, 614249, 614250, 614251, 614252, 614253, 614254, 614255, 614256, 614257, 614258, 614259, 614260, 614261, 614262, 614263, 614264, 614265, 614266, 614267, 614268, 614269, 614270, 614271, 614272, 614273, 614274, 614275, 614276, 614277, 614278, 614279, 614280, 614281, 614282, 614283, 614284, 614285, 614286, 614287, 614288, 614289, 614290, 614291, 614292, 614293, 614294, 614295, 614296, 614297, 614298, 614299, 614300, 614301, 614302, 614303, 614304, 614305, 614306, 614307, 614308, 614309, 614310, 614311, 614312, 614313, 614314, 614315, 614316, 614317, 614318, 614319, 614320, 614321, 614322, 614323, 614324, 614325, 614326, 614327, 614328, 614329, 614330, 614331, 614332, 614333, 614334, 614335, 614336, 614337, 614338, 614339, 614340, 614341, 614342, 614343, 614344, 614345, 614346, 614347, 614348, 614349, 614350, 614351, 614352, 614353, 614354, 614355, 614356, 614357, 614358, 614359, 614360, 614361, 614362, 614363, 614364, 614365, 614366, 614367, 614368, 614369, 614370, 614371, 614372, 614373, 614374, 614375, 614376, 614377, 614378, 614379, 614380, 614381, 614382, 614383, 614384, 614385, 614386, 614387, 614388, 614389, 614390, 614391, 614392, 614393, 614394, 614395, 614396, 614397, 614398, 614399, 614400, 614401, 614402, 614403, 614404, 614405, 614406, 614407, 614408, 614409, 614410, 614411, 614412, 614413, 614414, 614415, 614416, 614417, 614418, 614419, 614420, 614421, 614422, 614423, 614424, 614425, 614426, 614427, 614428, 614429, 614430, 614431, 614432, 614433, 614434, 614435, 614436, 614437, 614438, 614439, 614440, 614441, 614442, 614443, 614444, 614445, 614446, 614447, 614448, 614449, 614450, 614451, 614452, 614453, 614454, 614455, 614456, 614457, 614458, 614459, 614460, 614461, 614462, 614463, 614464, 614465, 614466, 614467, 614468, 614469, 614470, 614471, 614472, 614473, 614474, 614475, 614476, 614477, 614478, 614479, 614480, 614481, 614482, 614483, 614484, 614485, 614486, 614487, 614488, 614489, 614490, 614491, 614492, 614493, 614494, 614495, 614496, 614497, 614498, 614499, 614500, 614501, 614502, 614503, 614504, 614505, 614506, 614507, 614508, 614509, 614510, 614511, 614512, 614513, 614514, 614515, 614516, 614517, 614518, 614519, 614520, 614521, 614522, 614523, 614524, 614525, 614526, 614527, 614528, 614529, 614530, 614531, 614532, 614533, 614534, 614535, 614536, 614537, 614538, 614539, 614540, 614541, 614542, 614543, 614544, 614545, 614546, 614547, 614548, 614549, 614550, 614551, 614552, 614553, 614554, 614555, 614556, 614557, 614558, 614559, 614560, 614561, 614562, 614563, 614564, 614565, 614566, 614567, 614568, 614569, 614570, 614571, 614572, 614573, 614574, 614575, 614576, 614577, 614578, 614579, 614580, 614581, 614582, 614583, 614584, 614585, 614586, 614587, 614588, 614589, 614590, 614591, 614592, 614593, 614594, 614595, 614596, 614597, 614598, 614599, 614600, 614601, 614602, 614603, 614604, 614605, 614606, 614607, 614608, 614609, 614610		Ontario Canada	
---------------------------------------	---	--	-------------------	--



ARDIDEN

Pickle Lake, Kawashe Lake North	625482, 625483, 625484, 625485, 625486, 625487, 625488, 625489, 625490, 625491, 625492, 625493, 625494, 625495, 625496, 625497, 625498, 625499, 625500, 625501, 625502, 625503, 625504, 625505, 625506, 625507, 625508, 625509, 625510, 625511, 625512, 625513, 625514, 625515, 625516, 625517, 625518, 625519, 625520, 625521, 625522, 625523, 625524, 625525, 625526, 625527, 625528, 625529, 625530, 625531, 625532, 625533, 625534, 625535, 625536, 625537, 625538, 625539, 625540, 625541, 625542, 625543, 625544, 625545, 625546		Ontario Canada	
---------------------------------	--	--	-------------------	--

3. Mining tenements disposed of during the quarter and their location:

Project	Tenement Number	Status	Location	Comment
Seymour Lake	519785, 519786, 519787, 519788, 519789, 519790, 519791, 519792, 519793, 519794, 519795, 519796, 519797, 519798, 519803, 519804, 519805, 519806, 519807, 519808, 519809, 519810, 519811, 519812, 519851, 519852, 519853, 519854, 519855, 519856, 519857, 519858, 519859, 519860, 519861, 519862, 519863, 519864, 519865, 519866, 519935, 519936, 519937, 519938, 519939, 519940, 519941, 519942, 519943, 519944, 519945, 519946, 519947, 519948, 519949, 519950, 519951, 519952, 519953, 519954, 519955, 519881, 519882, 519883, 519884, 519885, 519886, 519887, 519888, 519889, 519890, 519891, 519892, 519893, 519894, 519895, 519896, 519897, 519898, 519899, 519900, 519901, 519902, 519903, 519904, 519905, 519906, 519907, 519908, 519909, 519910, 519911, 519912, 519913, 519914, 519915, 519916, 519917, 519918, 519919, 519920, 519921, 519922, 519867, 519868, 519869, 519870, 519871, 519872, 519873, 519874, 519875, 519876, 519877, 519878, 519879, 519880, 519923, 519924, 519925, 519926, 519927, 519928, 519929, 519930, 519956, 520020, 520021, 520022, 520023, 520024, 520025, 520026, 520027, 520028, 520029, 520030, 520031, 520032, 520033, 520034, 520035, 520036, 520037, 520038, 520039, 520040, 520041, 520042, 520043, 520044, 520045, 520046, 520047, 520048, 520049, 520050, 520051, 519957, 519958, 519959, 519960, 519961, 519962, 519963, 519964, 519965, 519966, 519967, 519968, 519969, 519970, 519971, 519972, 519973, 519974, 519975, 519976, 519977, 519978, 519979, 519980, 519981, 519982, 519983, 519984, 520052, 520053, 520054, 520055, 520056, 520057, 520058, 520059, 520060, 520061, 520062, 520063, 520064, 520065, 519813, 519814, 519815, 519816, 519817, 519818, 519819, 519820, 519821, 519822, 519823, 519824, 519825, 519826, 519827, 519828, 519829, 519830, 519831, 519832, 519833, 519834, 519835, 519836, 519837, 519838, 519839, 519840, 519841, 519842, 519843, 519844, 519845, 519846, 519847, 519848, 519849, 519850, 520066, 520085, 520086, 520087, 520088, 520089, 520090, 520091, 520092, 520093, 520094, 520095, 520096, 520097, 520098, 520099, 520100, 520101, 520102, 520103, 520104, 520105, 520106, 520107, 520108, 520109, 520110, 520111, 520112, 520067, 520068, 520069, 520070, 520071, 520072,		Ontario Canada	



ARDIDEN

520073, 520074, 520075, 520076, 520077, 520078, 520079, 520080, 520081, 520082, 520083, 520084, 520113, 520114, 520115, 520116, 520117, 520118, 520119, 519985, 519986, 519987, 519988, 519989, 519990, 519991, 519992, 519993, 519994, 519995, 519996, 519997, 519998, 519999, 520000, 520001, 520002, 520003, 520004, 520005, 520006, 520007, 520008, 520009, 520010, 520011, 520012, 520013, 520014, 520015, 520016, 520017, 520018, 520019, 519760, 519761, 519762, 519763, 519764, 519765, 519766, 519767, 519768, 519769, 519770, 519771, 519772, 519773, 519774, 519775, 519776, 519777, 519778, 519779, 519780, 519781, 519782, 519783, 519784			
---	--	--	--